



# **WATERFRONT SEATTLE CONSTRUCTION UPDATE**

Jessica Murphy, Construction Program Manager

**May 2024**



# HISTORY



**2001: Nisqually Earthquake** – damaged Alaskan Way Viaduct and Elliott Bay Seawall

**2001 - 2009** – Multi-agency Viaduct/Seawall replacement planning, design and environmental process (WSDOT, City, County, Port) – parallel City waterfront planning efforts

**2009 – 2010:**

- City/County/State decision on deep-bore tunnel replacement for SR99 viaduct structure
- Waterfront Committee and Team selection

**2010 – 2012**

- Broad community engagement
- Concept Design, Framework Plan, Strategic Plan adopted
- Seawall design and ballot measure

**2013 – 2018**

- OWCP created, detailed design and permitting begins
- Seawall reconstructed
- City, State funding secured
- Philanthropy, Waterfront LID advance to final agreements

**2019 – 2025: Waterfront Construction**

 **WATERFRONT SEATTLE PROGRAM**

 **SEAWALL PROJECT**

 **SR 99 TUNNEL PROJECT**

 **SEATTLE MULTIMODAL TERMINAL AT COLMAN DOCK PROJECT**

 **PARTNER PROJECTS**

Project construction dates are tentative and subject to change

ELLIOTT BAY

OLYMPIC  
SCULPTURE  
PARK

Waterfront Seattle  
(2018-2024)

Pier 62 Rebuild  
(2017-2020)

Seattle Aquarium Ocean  
Pavilion (2021-2024)

Seattle Multimodal Terminal  
at Colman Dock Project  
(2017-2023)

Seawall Project  
(2013-2017)

BELLTOWN

Pike Place Market's  
MarketFront (2015-2017)

PIKE PLACE  
MARKET

WEST EDGE

RETAIL CORE

SR 99 Tunnel Project  
(2011-2019)

PIONEER  
SQUARE

STADIUMS





# HISTORIC RAILROAD AVE (1931)







*1934-36 LOOKING NW  
TODAY'S PIER 54*



*1934-36 LOOKING NW  
TODAY'S PIER 70*





18017-4  
5-2-51





19107-8  
4-9-52





ITS

OVER

JAWS

WILL C

UR CR US HN

IT!

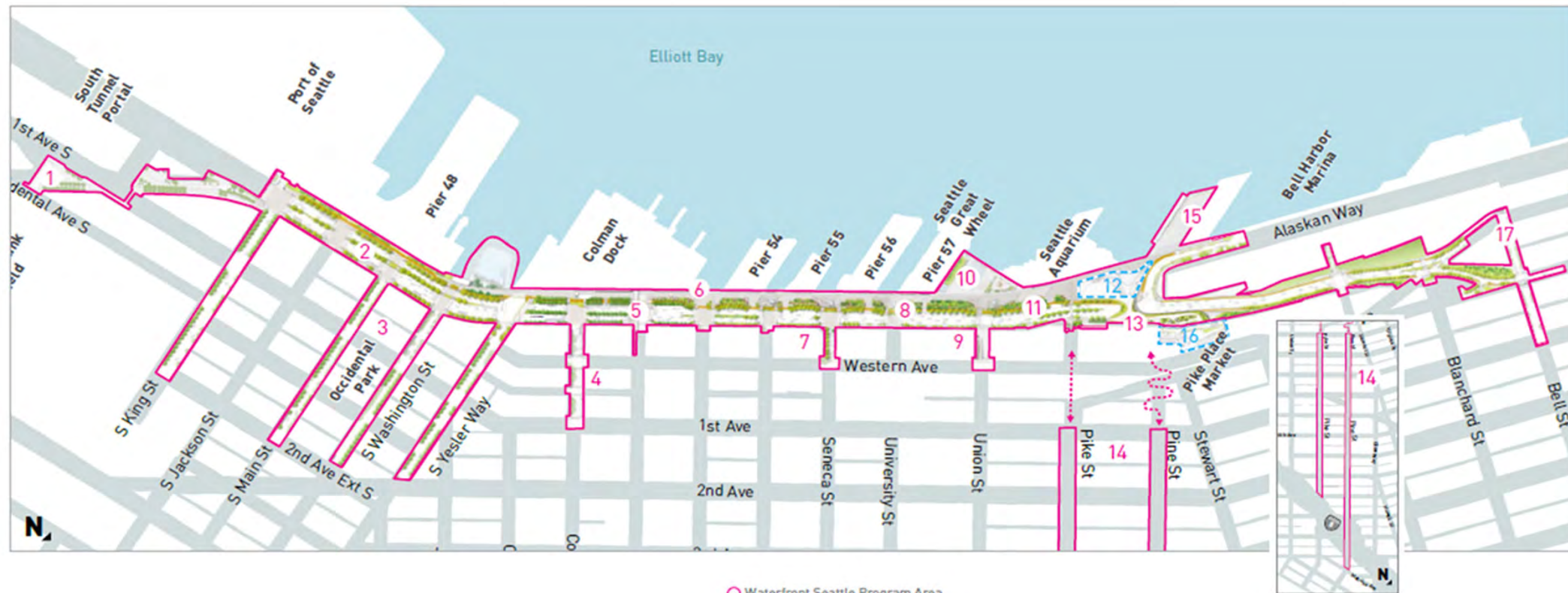
FERMA CORPORATION

FERMA CORPORATION

POSTED IN TRAILER



# PROJECT MAP



- Waterfront Seattle Program Area
- Related Projects

- |                                   |                                    |                                    |
|-----------------------------------|------------------------------------|------------------------------------|
| 1 Railroad Way                    | 7 Seneca Street                    | 14 Pike Pine Renaissance: Act One  |
| 2 Alaskan Way + Elliott Way       | 8 Promenade                        | 15 Pier 62 Rebuild                 |
| 3 Pioneer Square Streets          | 9 Union Street Elevator and Stairs | 16 Pike Place Market's MarketFront |
| 4 Columbia Street                 | 10 Waterfront Park                 | 17 Bell Street Park Extension      |
| 5 Marion Street Pedestrian Bridge | 11 Protected bike lane             |                                    |
| 6 Seawall                         | 12 Seattle Aquarium expansion      |                                    |
|                                   | 13 Overlook Walk                   |                                    |

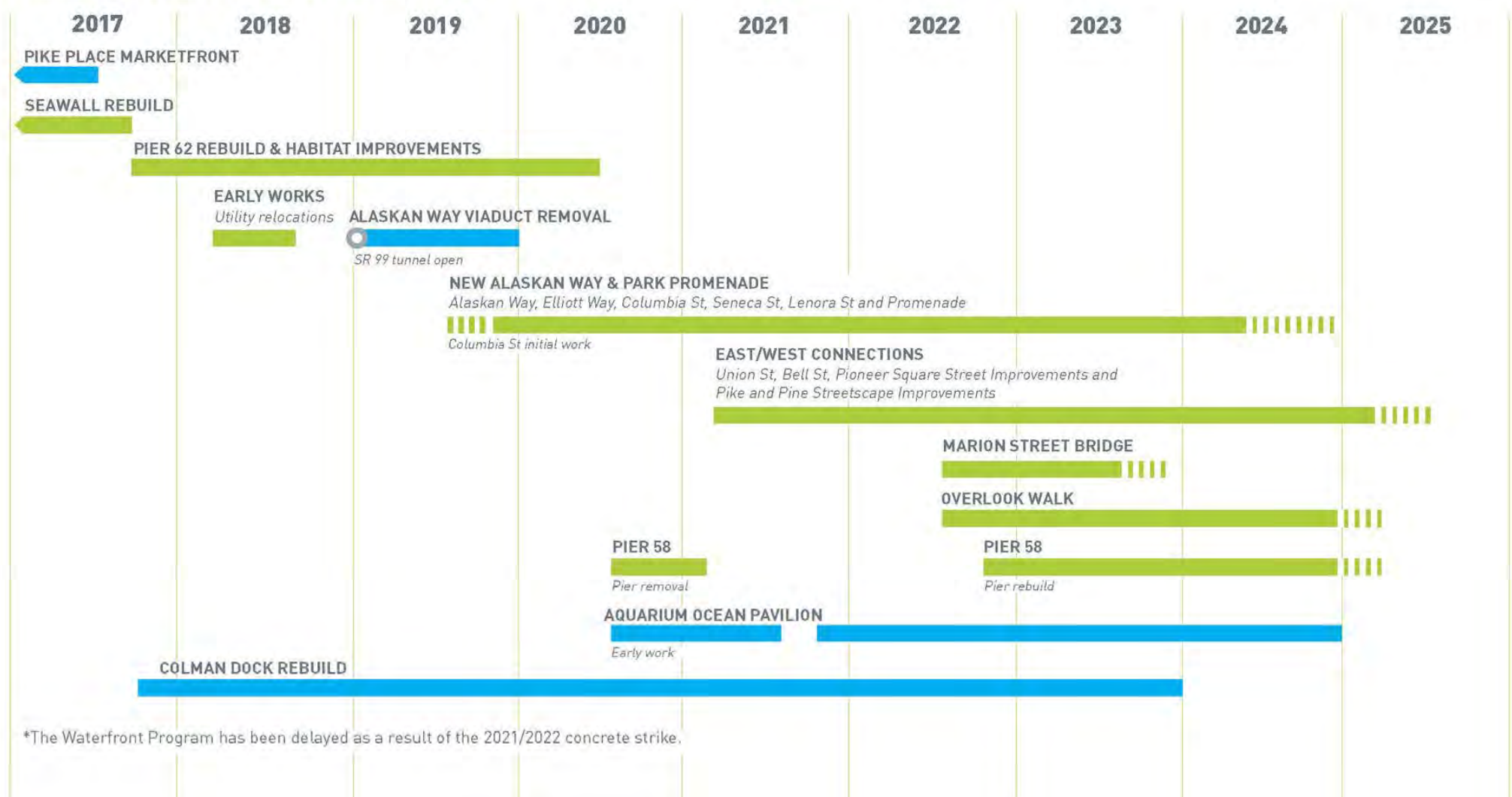


# CONSTRUCTION SCHEDULE



## CONSTRUCTION SCHEDULE

Waterfront Seattle Related projects Concrete strike delays\*





# ELLIOTT BAY SEAWALL

Completed in 2017





# PIER 62

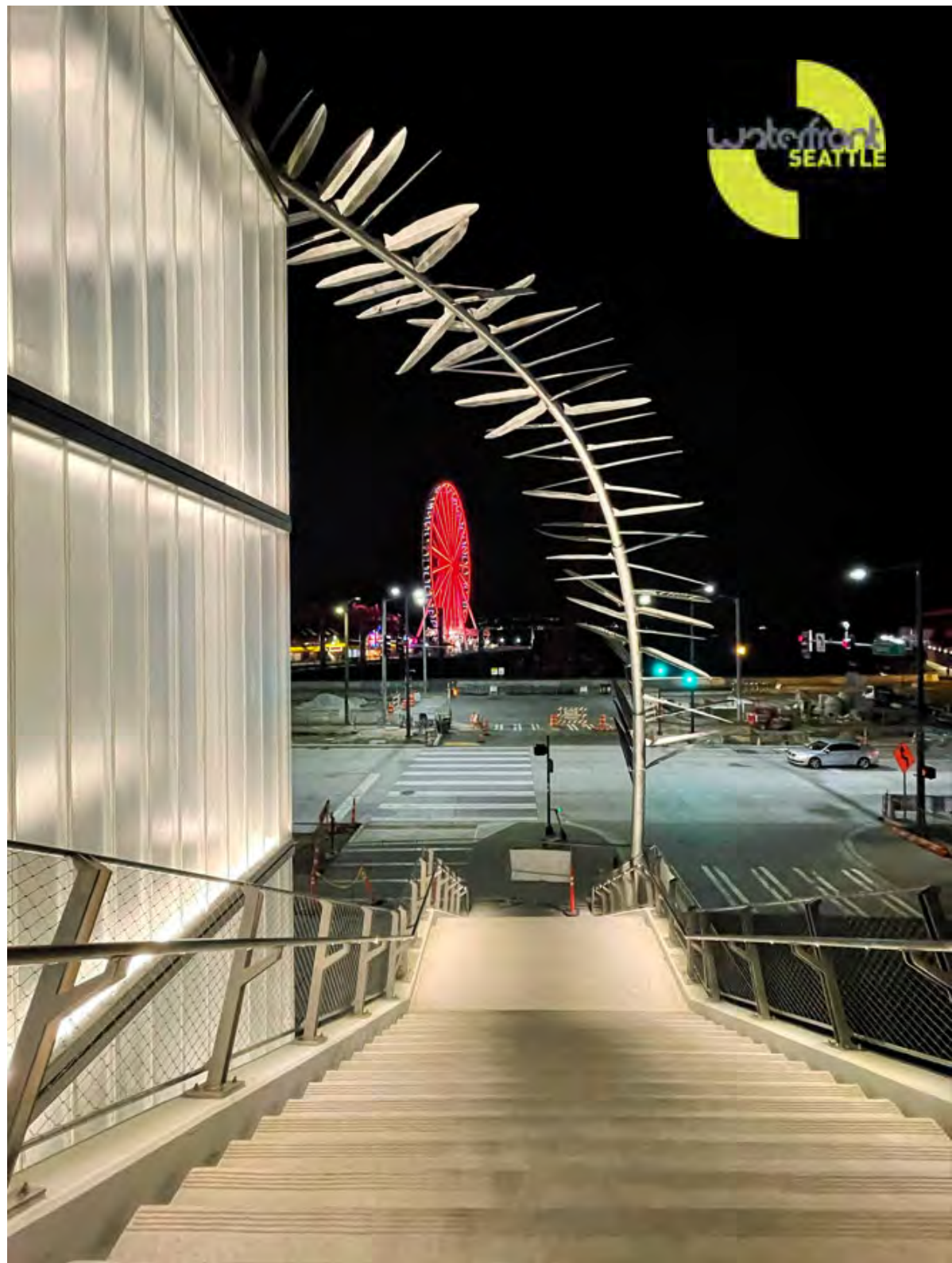
Opened in September 2020





# UNION STREET PEDESTRIAN BRIDGE

Opened in December 2022





# ELLIOTT WAY/ DZIDZILALICH

Opened in April 2023





# ELLIOTT WAY + LENORA BRIDGE

Opened April 2023





# PIONEER SQUARE HABITAT BEACH

Opened in July 2023





# MARION STREET PEDESTRIAN BRIDGE

Opened in December 2023





## CENTRAL PUBLIC SPACES



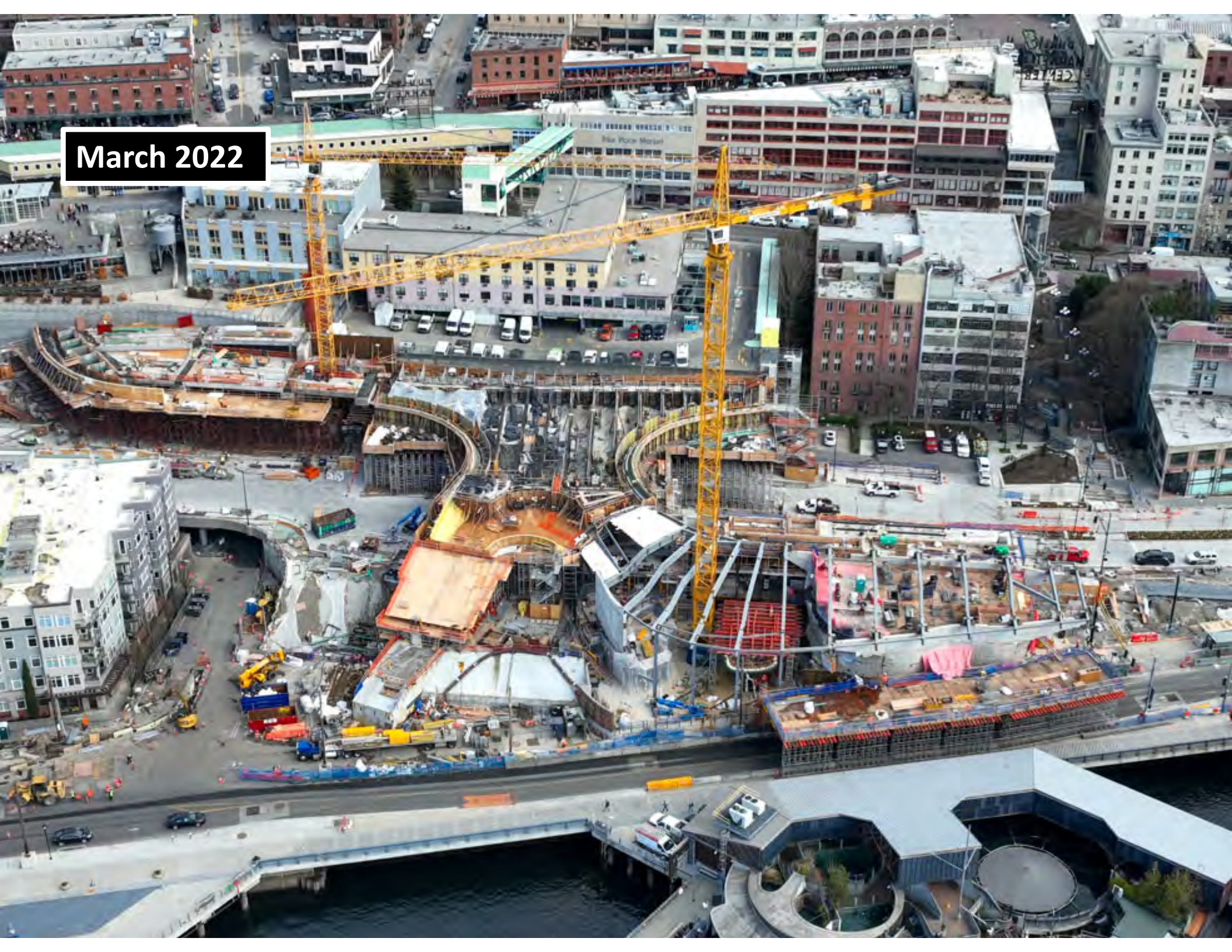


# OVERLOOK WALK & AQUARIUM



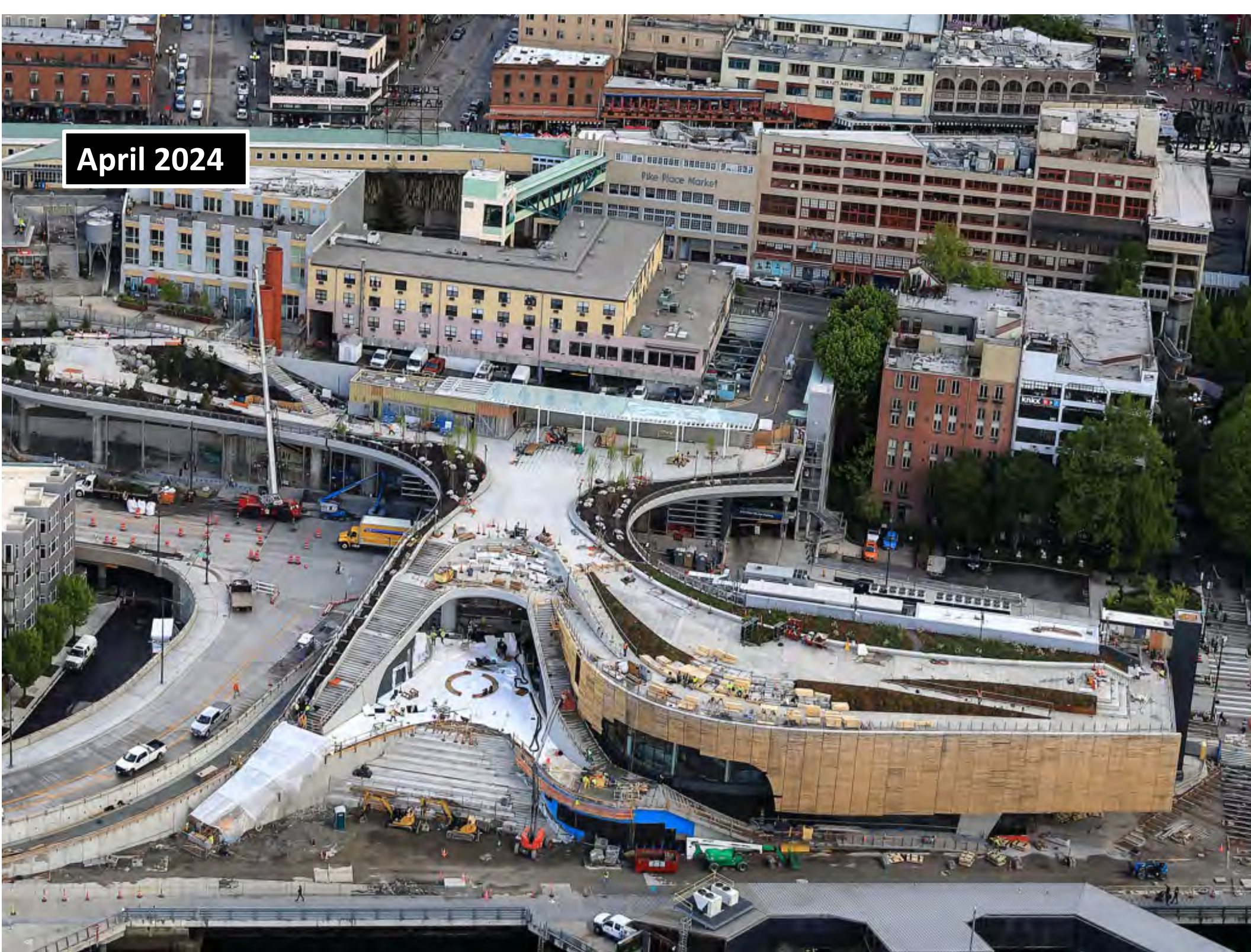


March 2022





April 2024

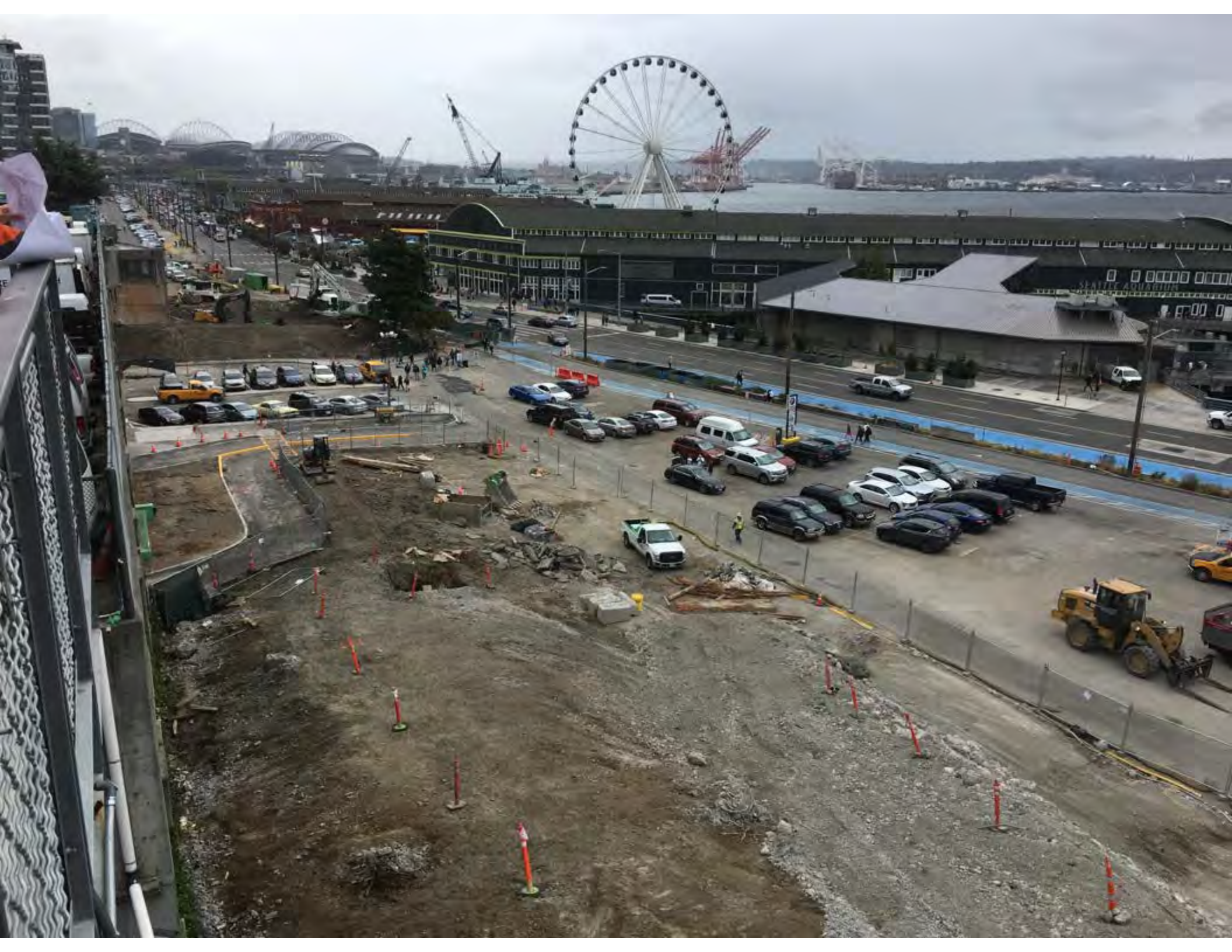




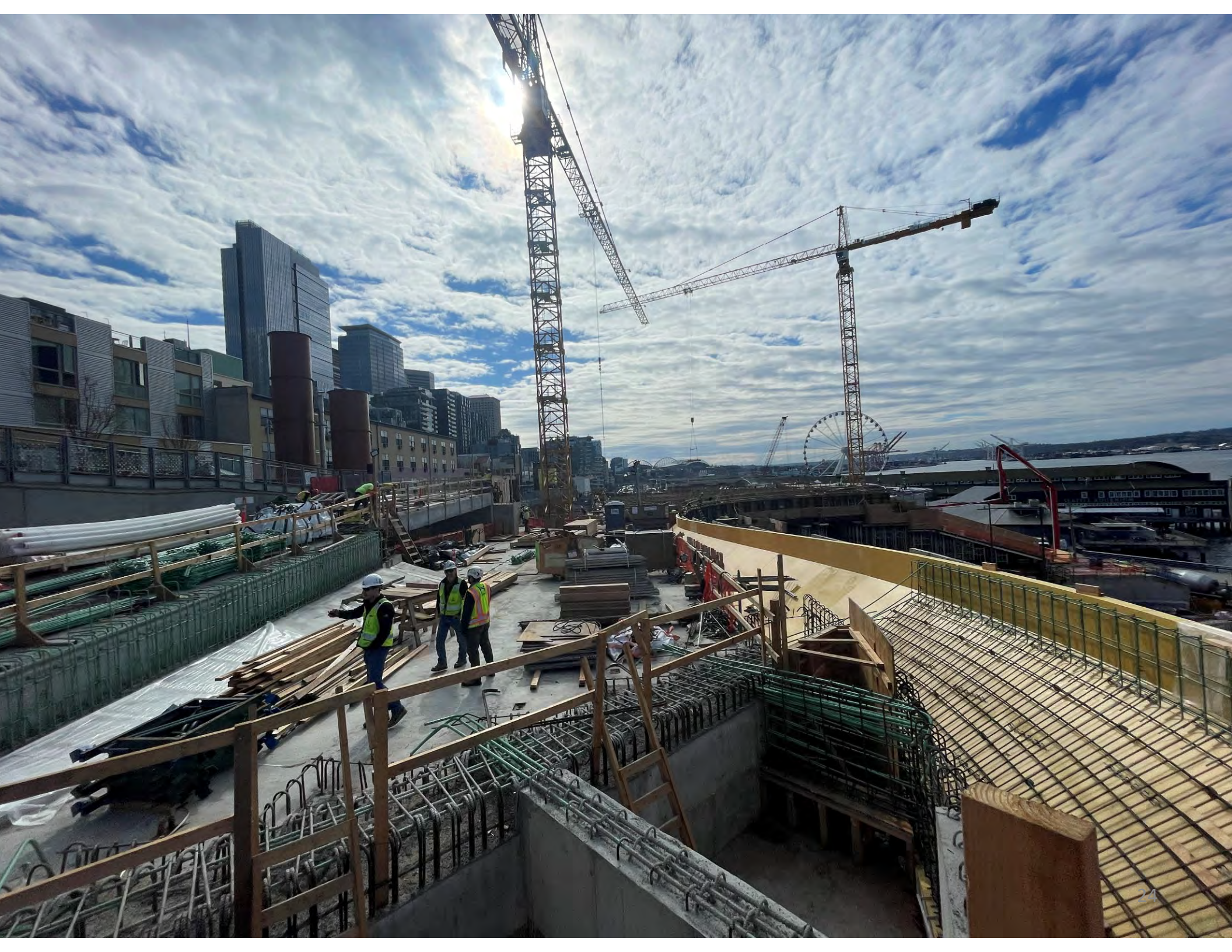
# OVERLOOK WALK



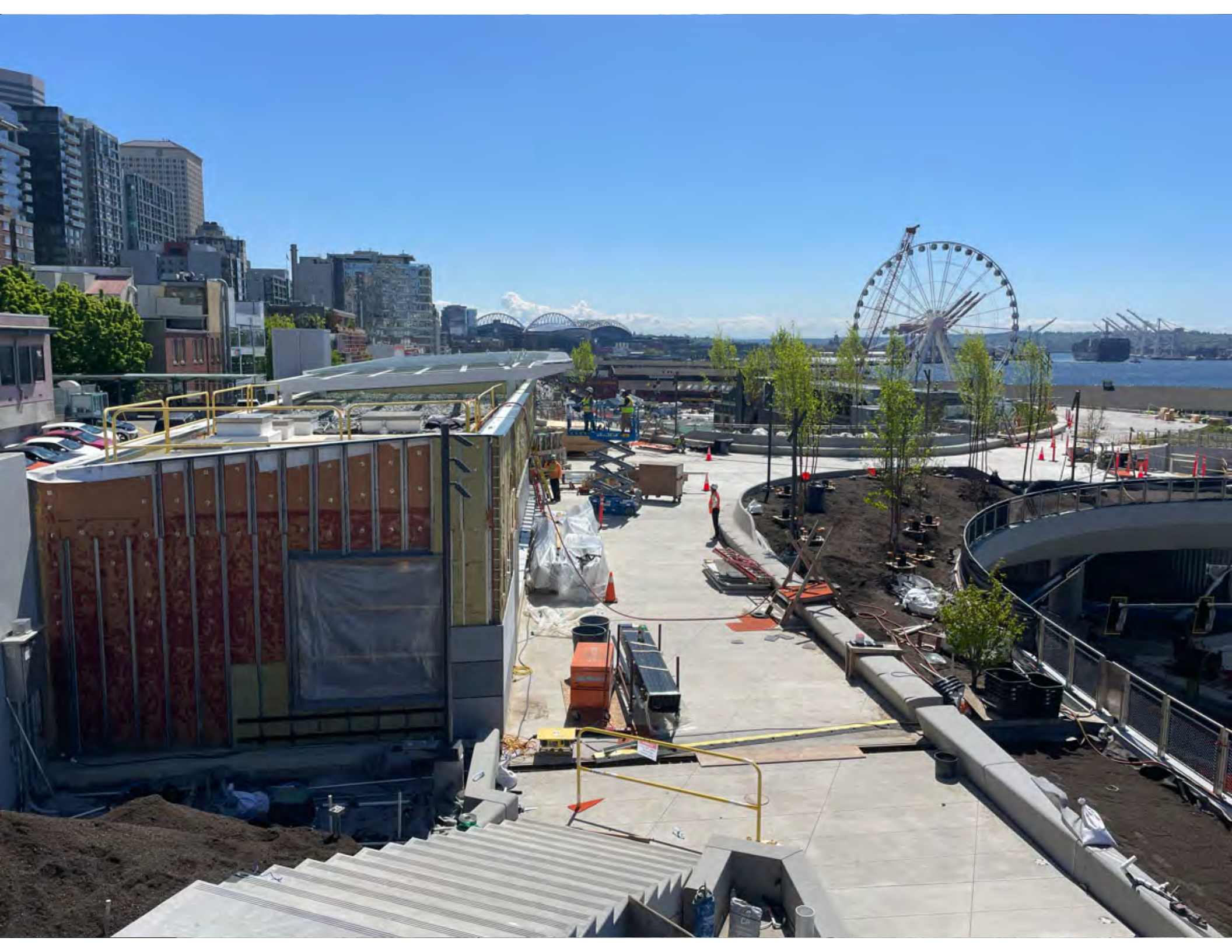






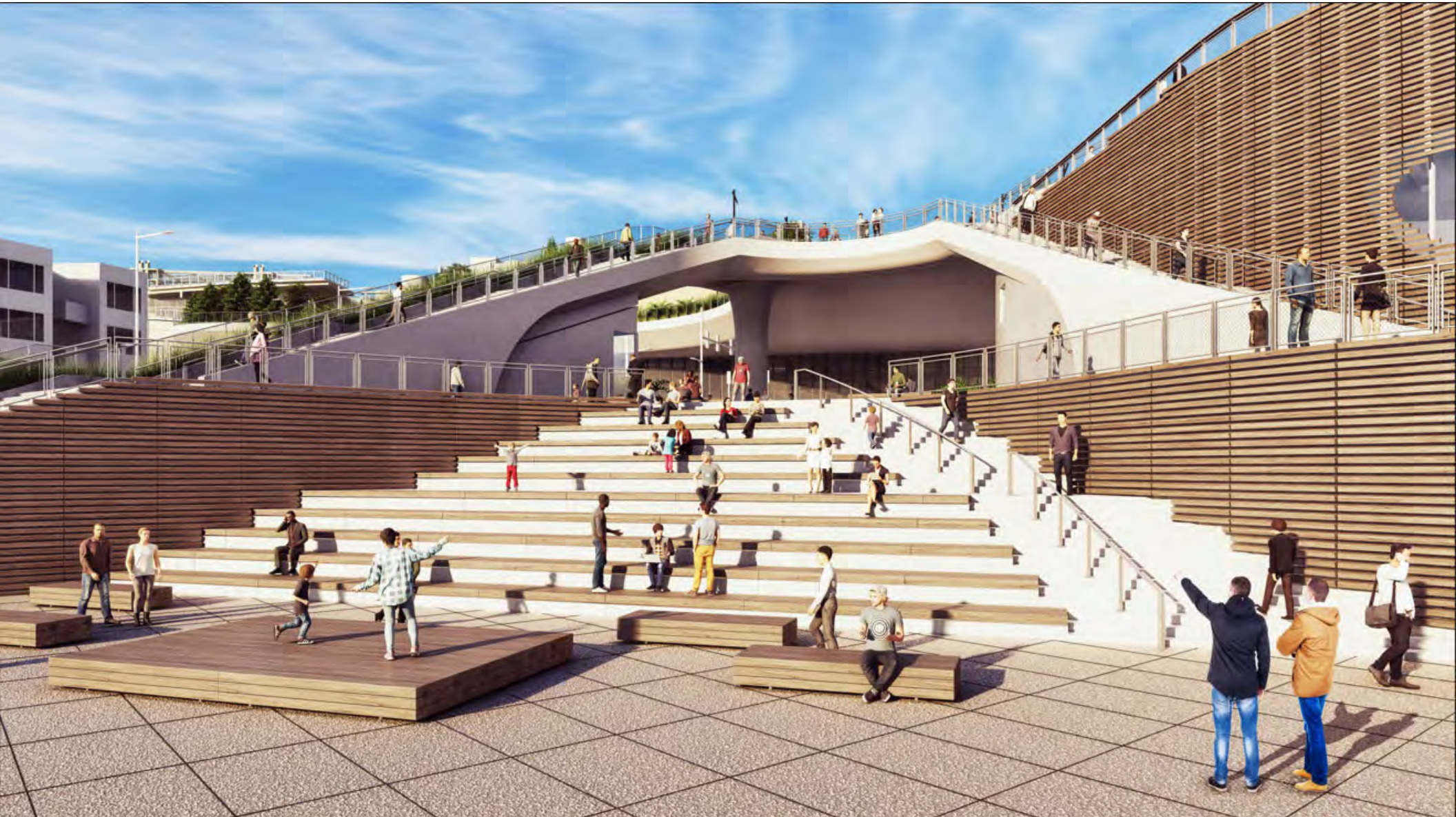




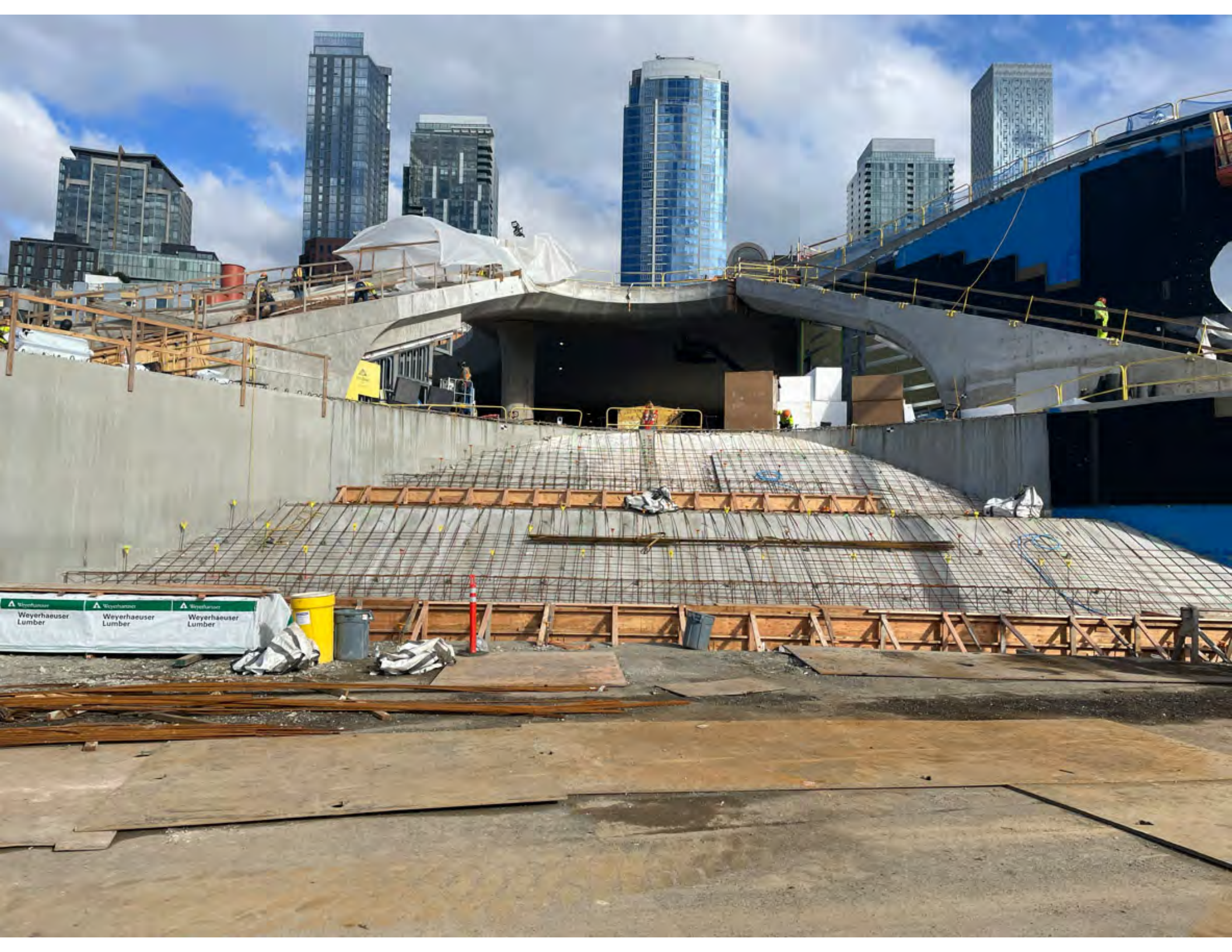




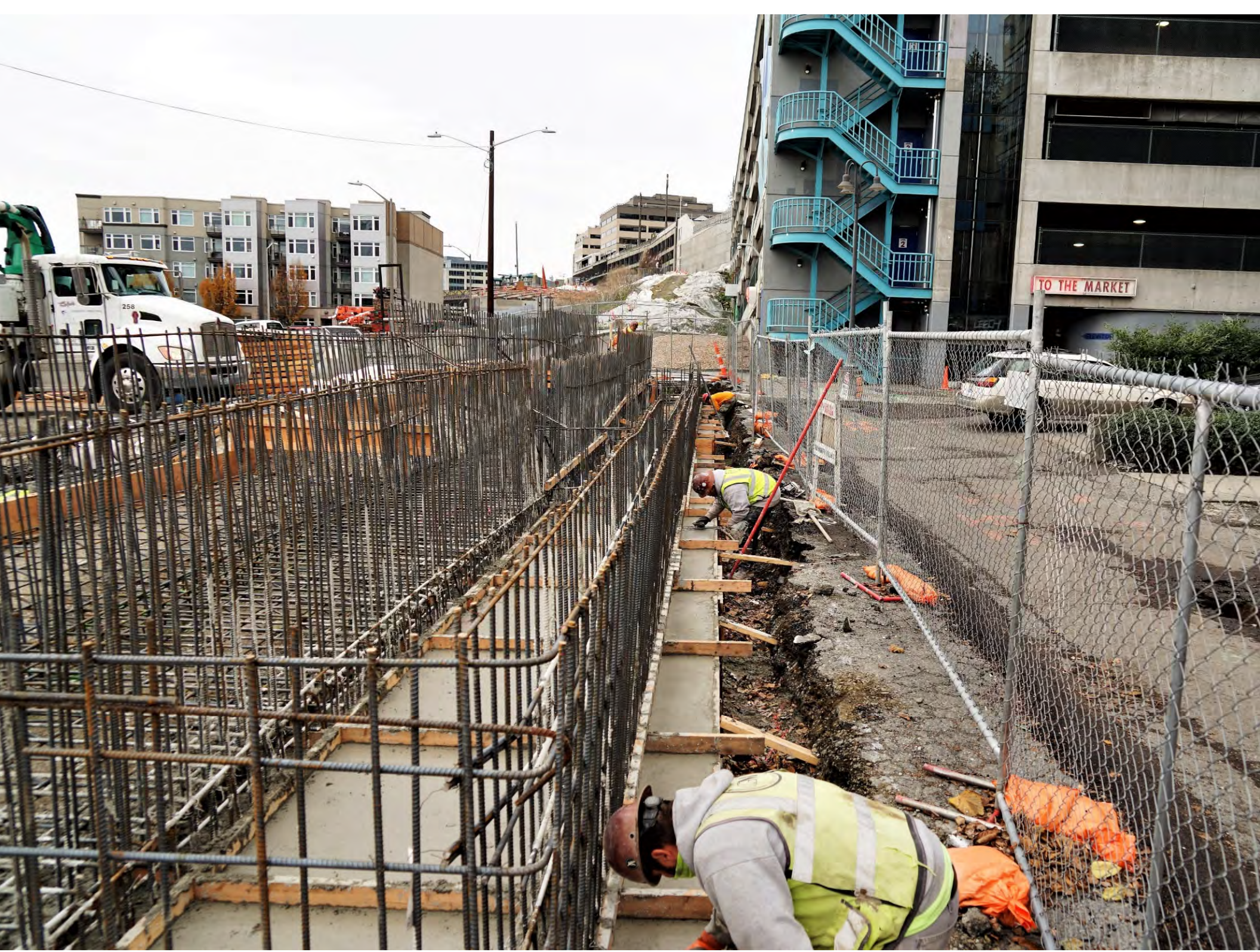
# OVERLOOK WALK

















# PARK PROMENADE













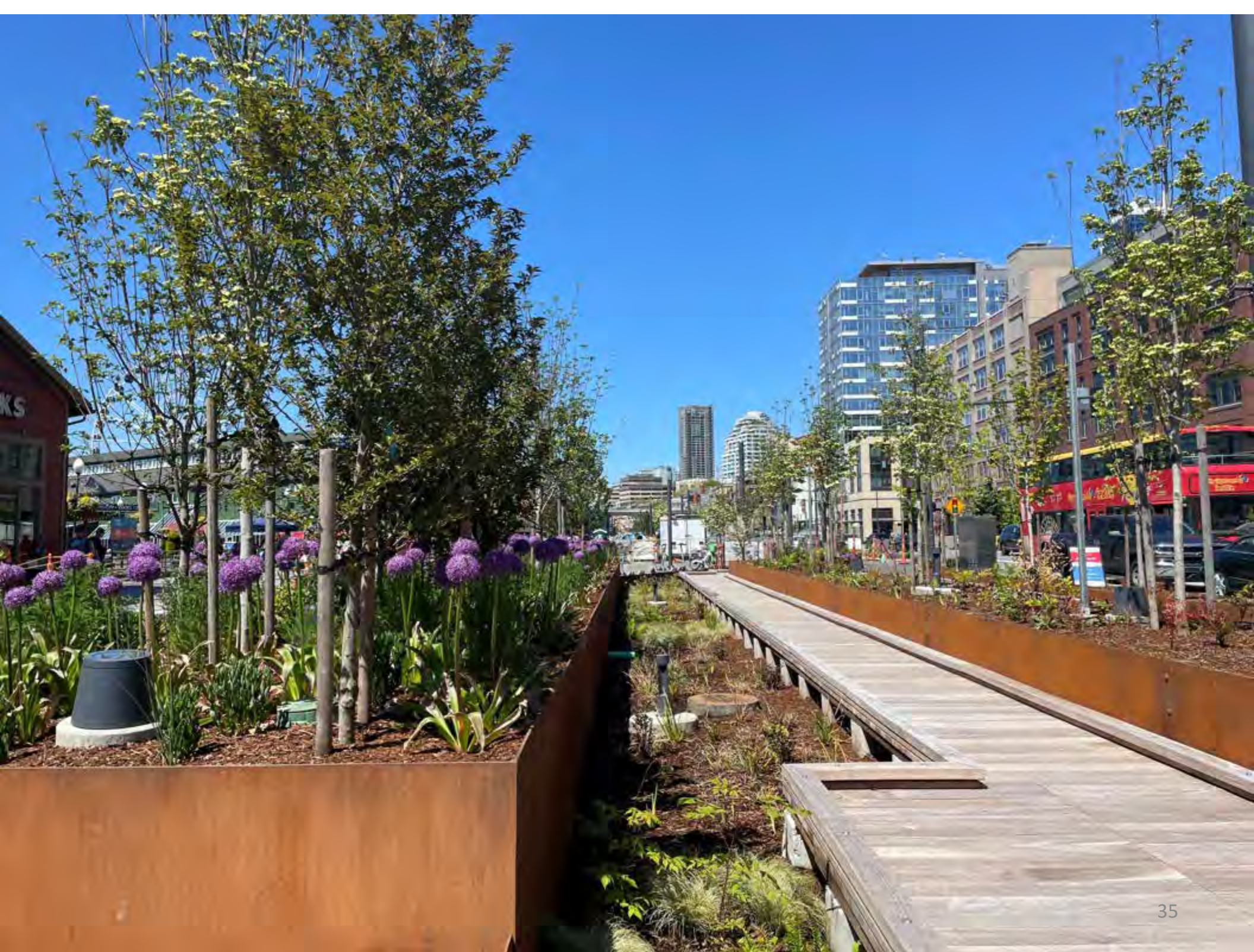




# PARK PROMENADE



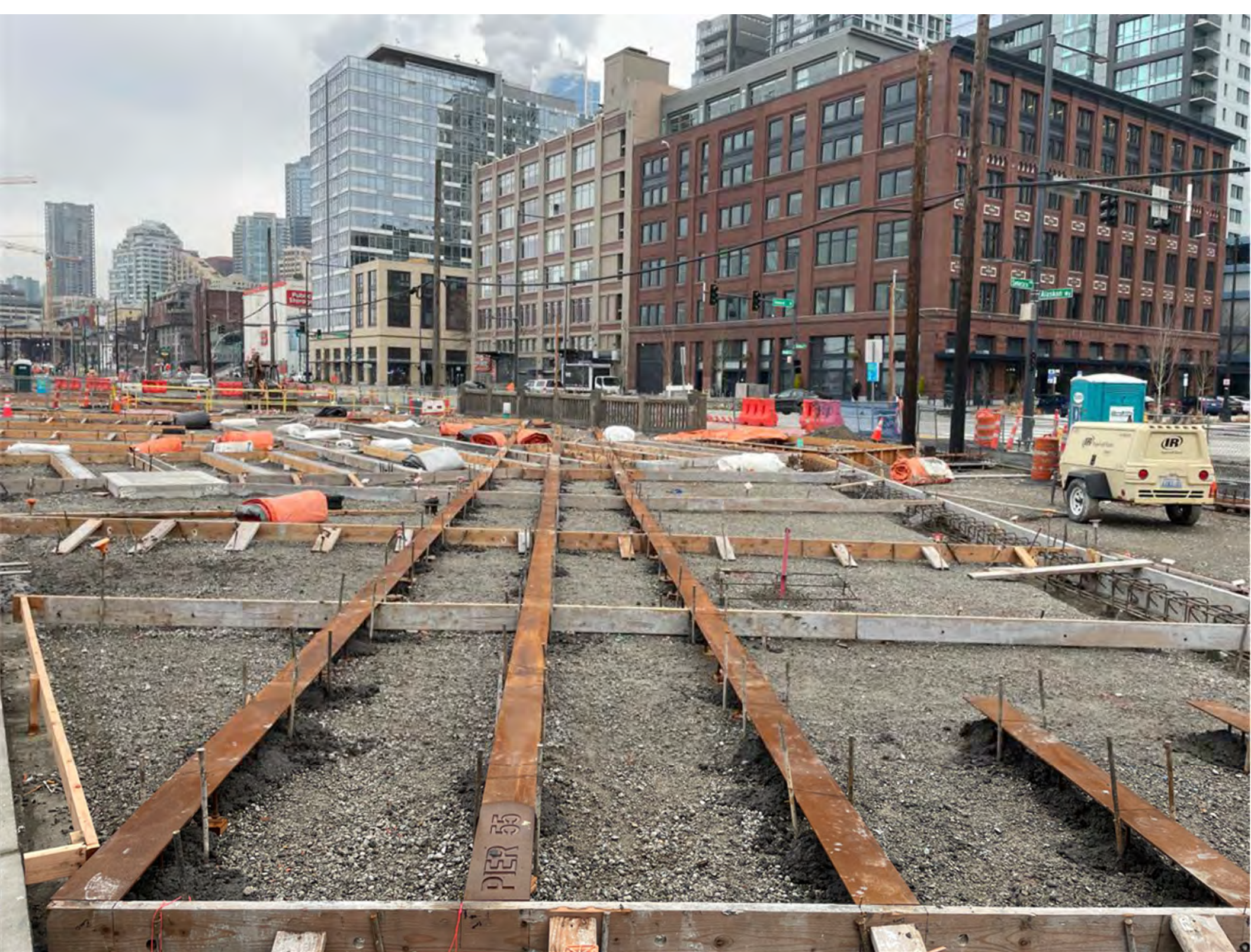




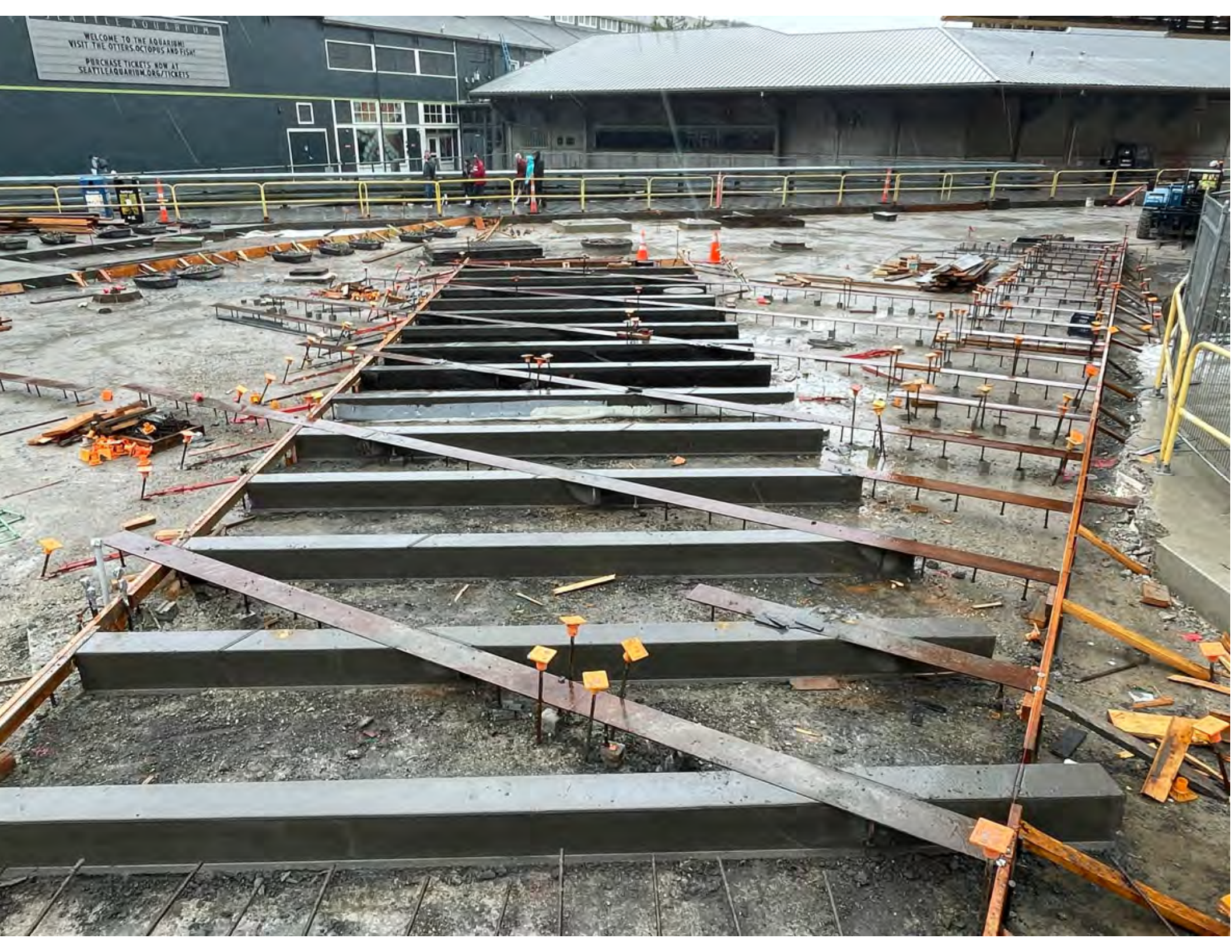




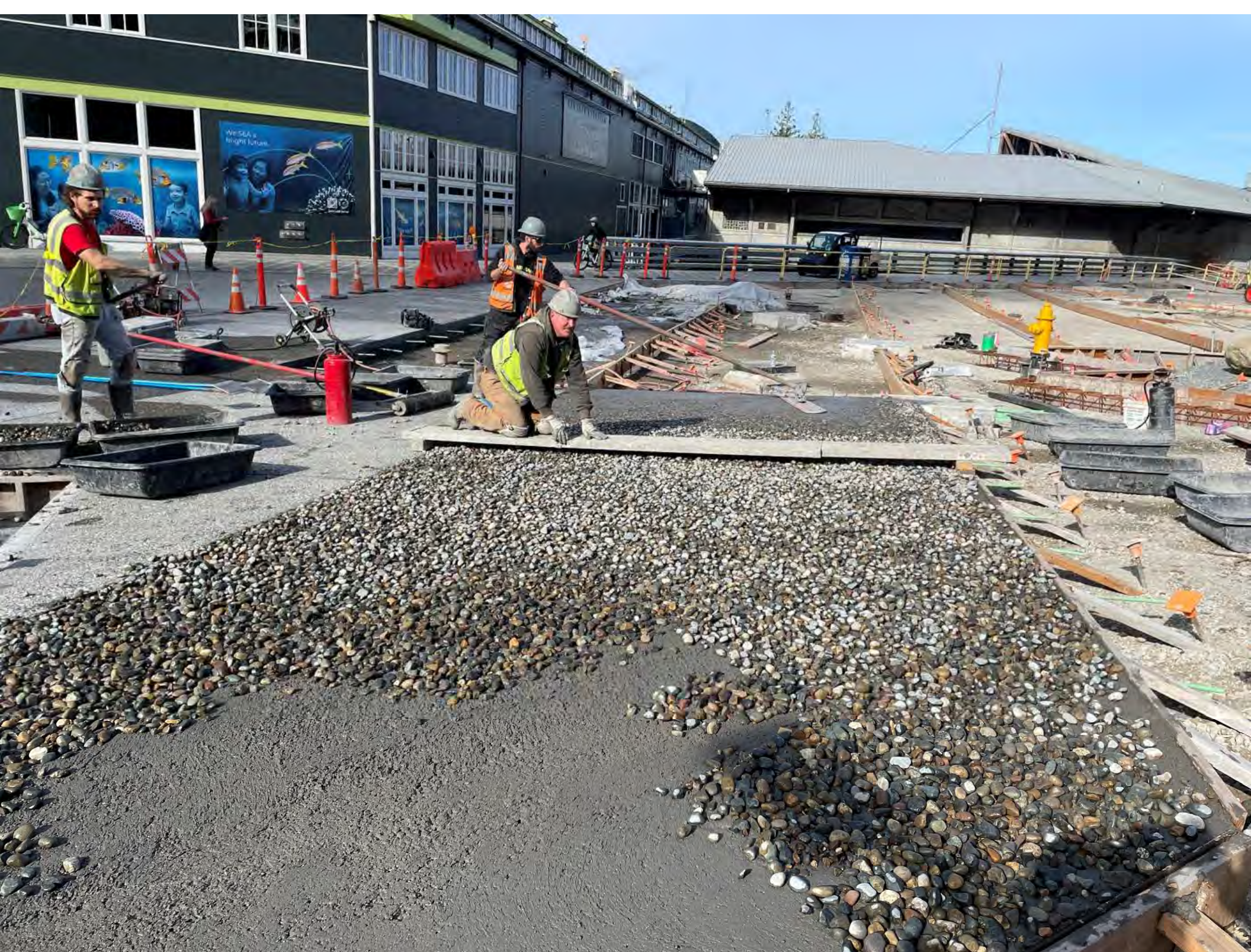










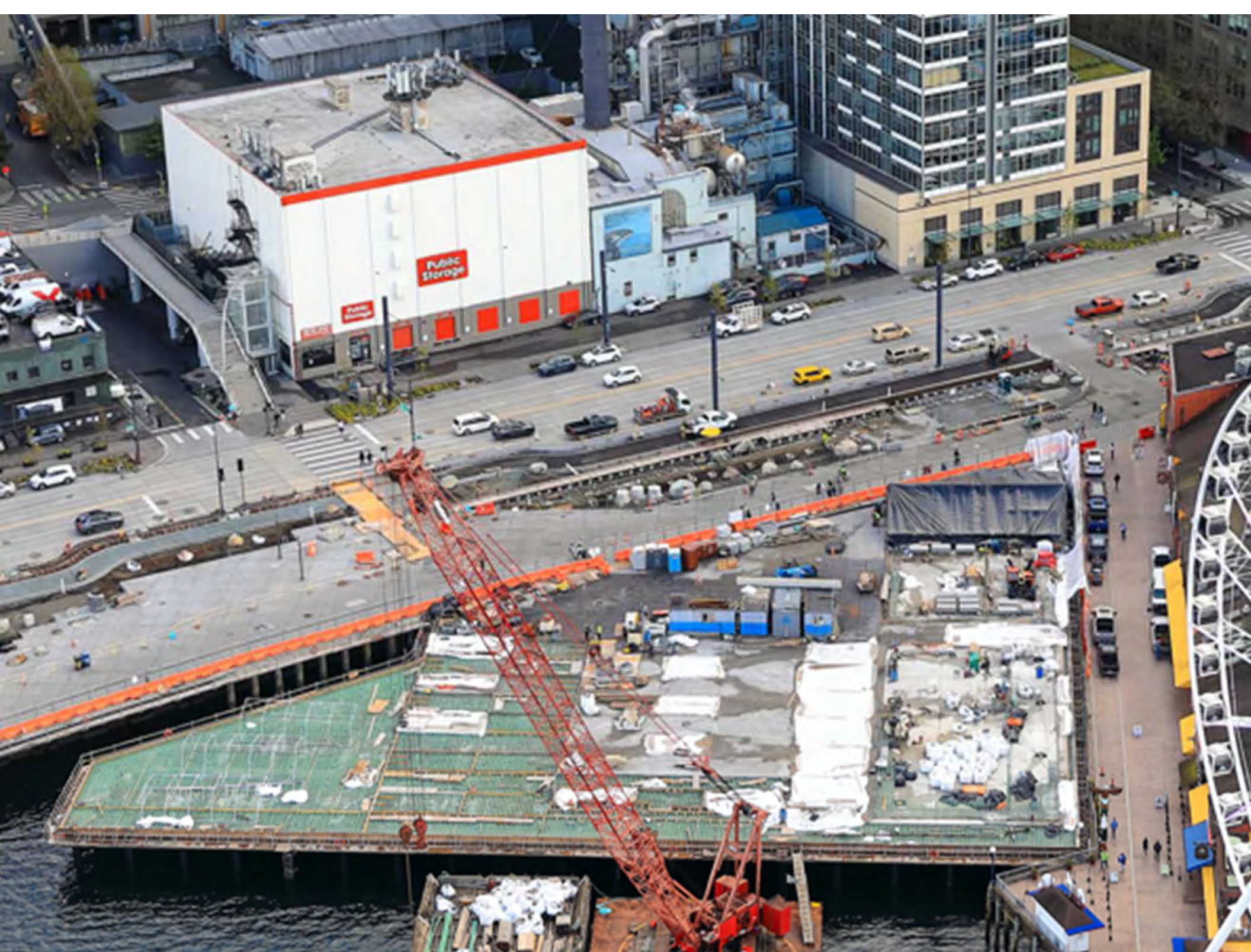




# PIER 58









# WATERFRONT RESTROOM





## Slide 42

---

**IPO**

ARGH it won't let me crop this so that there is less foreground.

Iris Picat, 2024-02-09T23:40:57.701

**JRO 0**

[@Iris Picat] how's this looking?

Jaybee Ragudo, 2024-02-10T00:13:35.029



# PIONEER SQUARE IMPROVEMENTS

Opens in December 2024



*View at S Washington St and 1st Ave S, facing west*



*Rendering of improvements on S Washington St and 1st Ave S, facing west*







# PIKE & PINE IMPROVEMENTS

Opens in Summer 2024

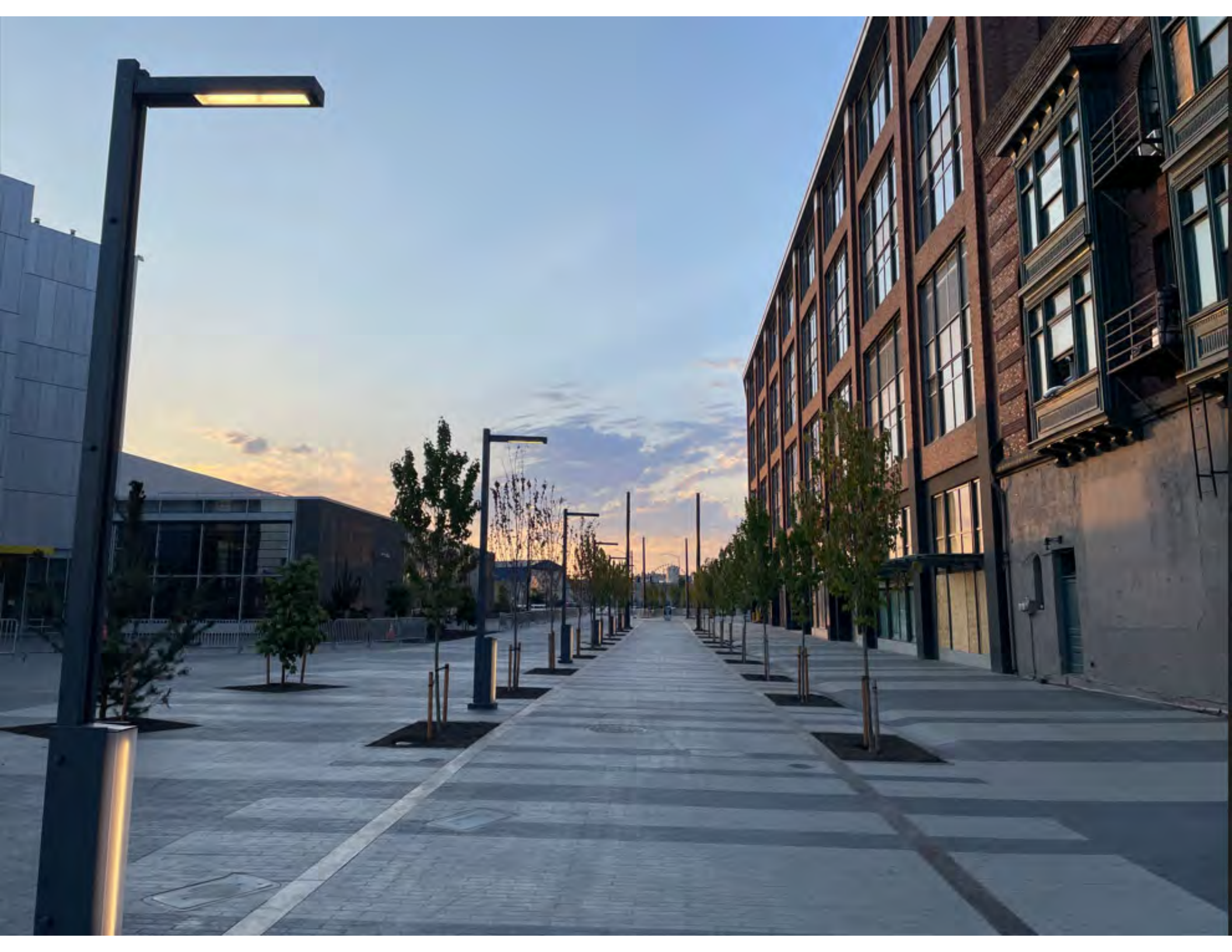




# RAILROAD WAY











# QUESTIONS?

Contact us at:  
[info@waterfrontseattle.org](mailto:info@waterfrontseattle.org)  
206.499.8040  
[waterfrontseattle.org](http://waterfrontseattle.org)