



NORTHWEST  
CONSTRUCTION  
CONSUMER  
COUNCIL



## PROJECT TOUR

Oregon Zoo

Polar Passage, Primate Forest, & Rhino Project



- Oregon Zoo
- Passed in 2008
- \$125 Million Bond Program
- Multi-Phase Improvements to the Zoo

- ## Program Goals
- Provide more humane care for animals
  - Protect animal health and safety
  - Increase access to conservation education
  - Conserve and reuse water
  - Improve water quality



# Project Background

## Program Phases

- Veterinary Medical Center
- Water Main Building
- Penguin Water Conservation
- Condors of the Columbia
- Elephant Lands
- Education Center
- *Polar Bears*
- *Primates*
- *Rhinos*





## LEGEND

### CIRCULATION

- Visitor Path
- Service Path / Parking

### ANIMAL MANAGEMENT

- Exhibit
- Holding
- Off-Exhibit Yard

### BUILDINGS & FACILITIES

- Visitor Amenity
- Exhibit Building
- Admin / Support
- LSS Building
- View Shelter
- Storage

### LANDSCAPE

- Buffer Vegetation
- Pools and Stream



## PROGRAM

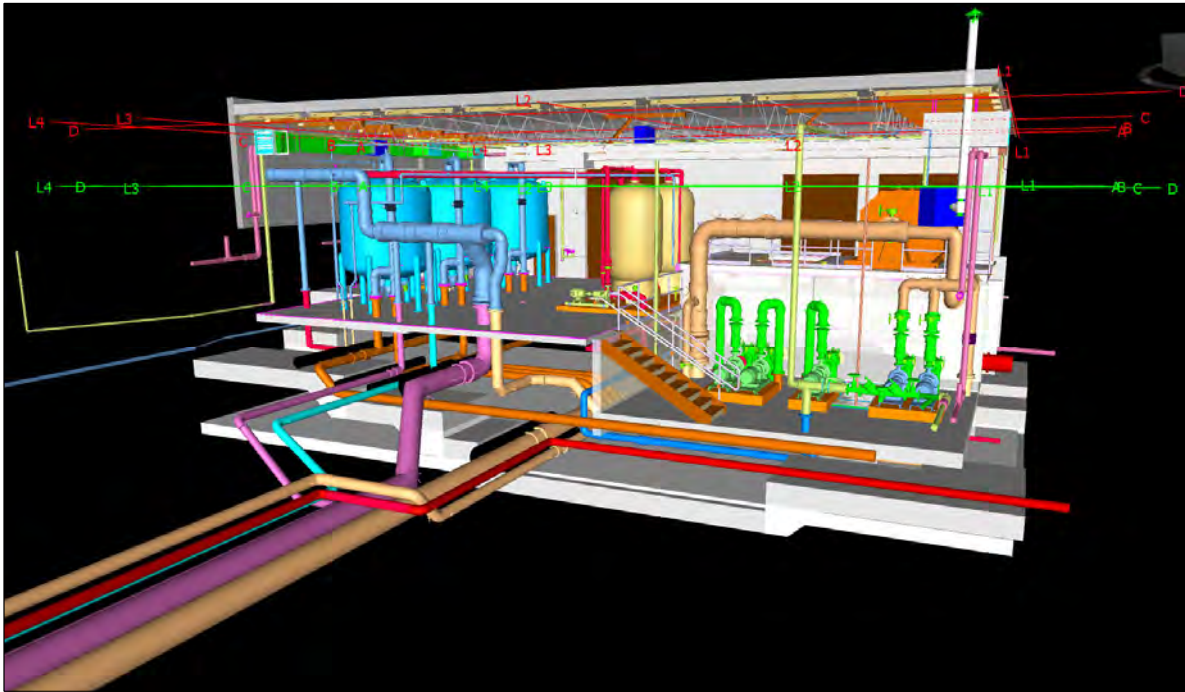
Headland Habitat	10,000 SF
Meadow Ridge Habitat	11,500 SF
Off-Exhibit Yard	3,600 SF
LSS Building	4,100 SF
Holding Building	2,800 SF
Interpretive	1,100 SF
Café	1,600 SF
Storage Building	1,900 SF
New Chimpanzee Building	5,070 SF
Existing Chimpanzee Habitat	11,500 SF
New Chimpanzee Habitat	4,000 SF
Existing Rhino Habitat	6,700 SF
New Rhino Habitat	3,300 SF
Shade Structure- Shallow Pool	800 SF
Shade Structure- Deep Pool	800 SF
Event Space	12,000 SF

March 2019



March 2021













A polar bear is standing in an enclosure, holding a small white box in its mouth. The enclosure features a large log and a pile of rocks. The background shows a fence and some trees.

# THANK YOU!