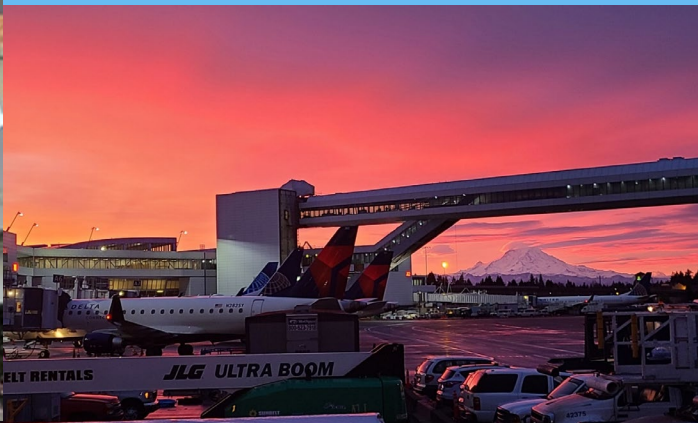


Port of Seattle

NWCCC - Portfolio of Projects

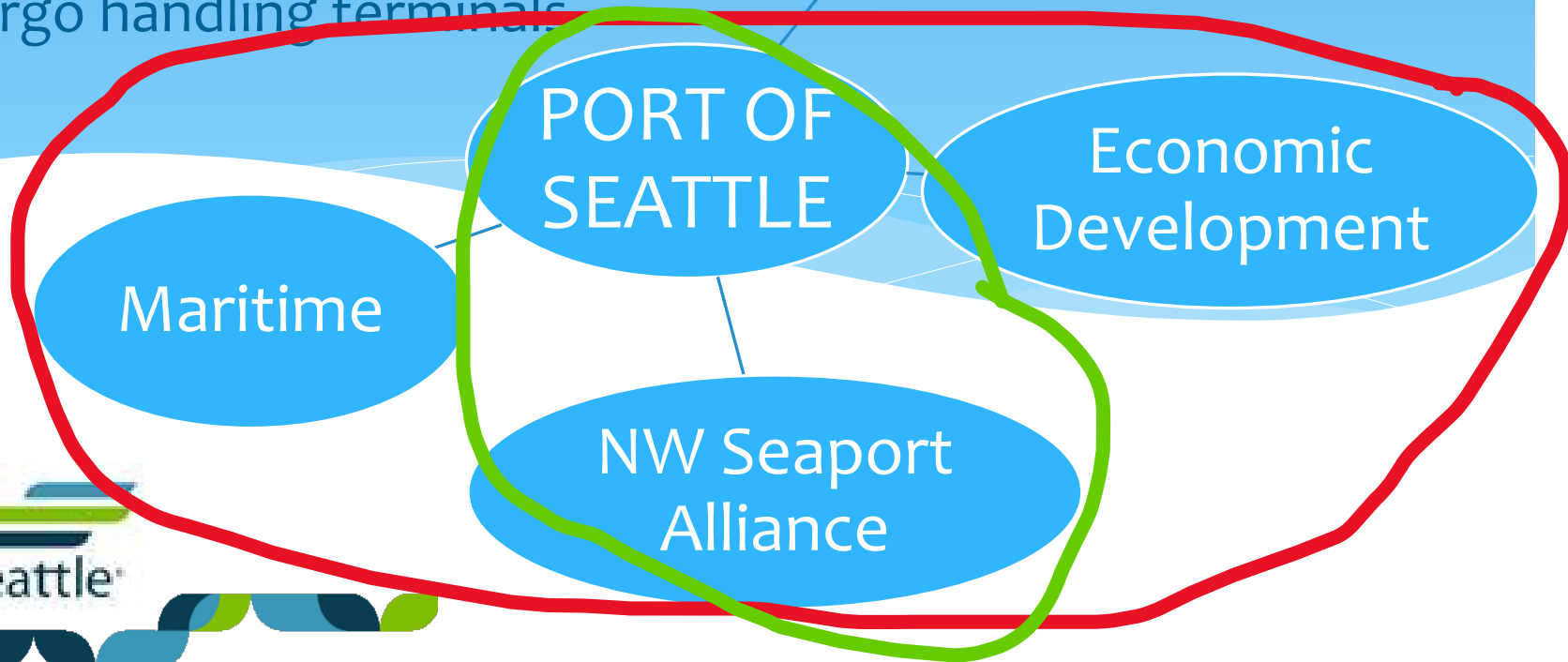
Facilitating Commerce and Construction Opportunities

Jonathan Ohta, P.E.
Sr. Construction Manager



About the Port Of Seattle

- ~~Seattle Tacoma International Airport – 8th busiest in country~~
- Two cruise terminals
- Fisherman's terminal
- Four public marinas
- Real estate holdings
- Cargo handling terminals



Seaport Area of Responsibility





Capital Plan Summary

Capital Plan Summary by Division

\$ in 000's	2020 Fcst	2021	2022	2023	2024	2025	2021-2025
Aviation	501,720	464,234	686,580	673,831	791,875	692,070	3,308,590
Maritime	21,875	26,383	52,663	41,955	49,650	67,675	238,326
Economic Development	10,167	5,874	26,812	31,089	6,711	3,585	74,071
Stormwater Utility	321	1,400	1,520	500	500	500	4,420
Central Services and Other	9,604	10,636	9,082	21,102	26,931	10,490	78,241
Total	543,687	508,527	776,657	768,477	875,667	774,320	3,703,648

Our partnership with the Northwest Seaport Alliance adds an additional **\$350M** in capital budget not represented in the above table.

Project Delivery Method Options

- Default: Design-Bid-Build
- GC/CM
- GC/CM with MC and EC/CM
- Heavy Civil GC/CM
- Traditional (Best Value Lump Sum) Design-Build
- Progressive (QBS/Price-Factor) Design-Build
- Building Engineered System (similar to DB)
- Job Order Contracting
- Tenant Reimbursement Agreement



Maritime Division Projects

- * Shilshole Bay Marina Customer Service Facilities (2020)
- * Terminal 91 – NW Fender Replacement
- * Terminal 91 – Berths 6 & 8
- * Pier 66 Shore Power
- * Maintenance and rehab of existing facilities
- * New T46 Cruise Terminal (delayed)

2021-2025 Capital Budget of \$367mil

Shilshole Bay Marina Customer Service Facilities



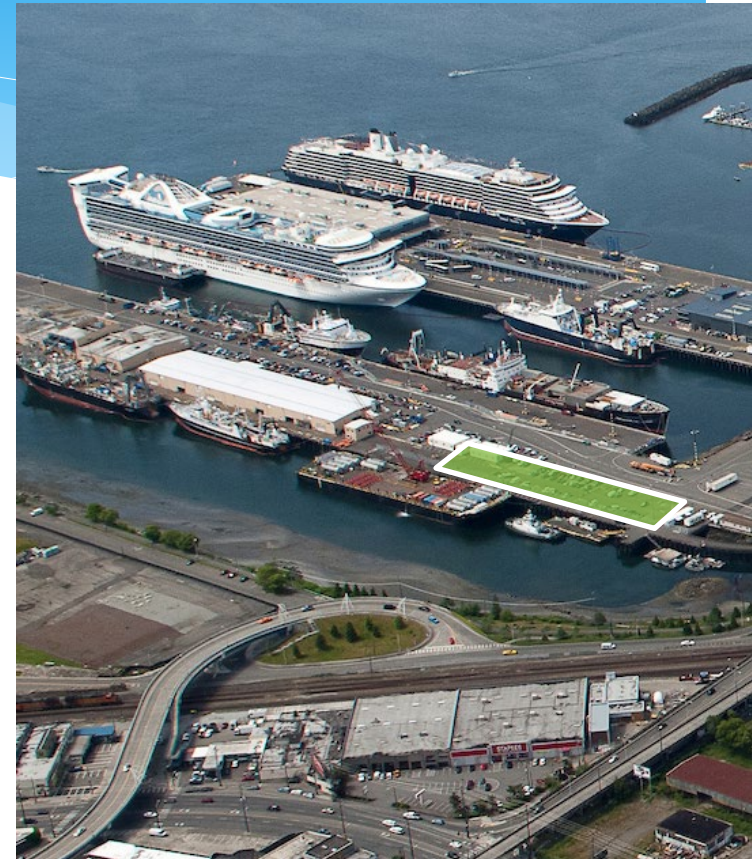
Pier 90 - Berths 6 & 8

DESCRIPTION

- Demolition of existing Pier and apron structure, removal of most creosote piling
- Construction of new 650psf pier tailored to fishing vessel and industrial customers, including applicable utilities, bollards and steel fender system
- Relocation of existing office space as required

GOALS

- Bring Berths 6 & 8 back into service for large fishing vessels (and other customers) with improved berth efficiency and access
- Provide more flexibility to accommodate a variety of vessel sizes



Economic Development Division – Real Estate

- * 4,300 Acres
- * 40 Acres of Parks

Projects:

- * Pier 66 Bell Harbor Conference Center (2020)
- * World Trade Center HVAC (BES)
- * Elevator Modernizations (BES)
- * Terminal 91 Uplands
- * Fishermen's Terminal Development
- * Maritime Innovation Center



2nd Largest Land Owner in King County

Pier 66 Bell Harbor International Conference Center



Maritime Innovation Center



Terminal 91 Uplands

- * Phase 1 - 100,000 sqft of maritime/industrial space.
- * Phase 2 - additional 300,000 sqft.
- * Planned construction start: late 2023



The Northwest Seaport Alliance

- * Consolidated Container Cargo Operations between Tacoma & Seattle
- * Single Commercial Entity
- * 50/50 Ownership
- * 3rd Largest Gateway in N.A.
- * Supports WA AG & MFG
- * Economic Impact:
 - * 48,000 Jobs
 - * \$4.3B Business Revenue
 - * \$1.1B State & Local Taxes



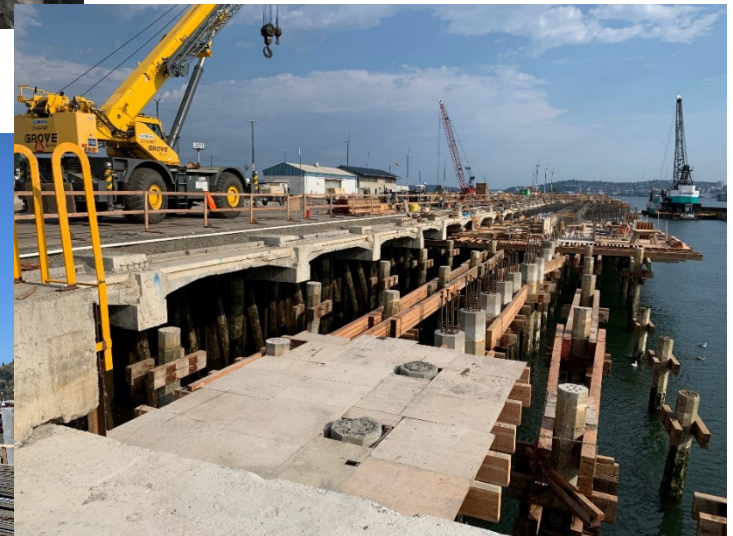
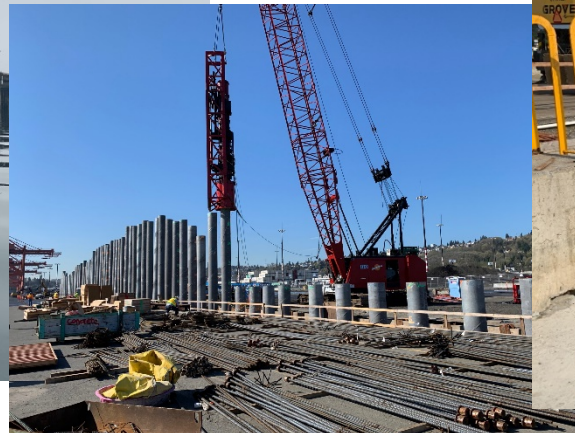
Collaboration Improves Asset Utilization, Creates Jobs, and Our Competitive Position

The Northwest Seaport Alliance

- * Terminal 5 Berth Modernization
- * Terminal 46 Dock Rehabilitation and Stormwater Improvements (2021)
- * Terminal 5 North Reefer
- * Terminal 106 Customs Border Patrol Office (DB)

Executed in North Harbor by the Port of Seattle for the Alliance

Terminal 5 Berth Modernization



Environmental Stewardship

Air Emissions & Energy
Reduction Programs
Storm Water Management
Habitat Restoration
Clean Up & Remediation



- Sites 23-25 Restoration (Terminal 117)
- Lower Duwamish Waterway Clean Up

Leave it better than we found it...

Sites 23-25 Restoration



Our Contracting Partners 2020-21

- * American Construction
- * Glacier Environmental Services
- * ICON Materials
- * Johansen Mechanical
- * Orion Marine Group
- * PCL Construction
- * Puget Paving and Construction
- * Scarsella Bros
- * Stellar J Corporation
- * Turner Construction Company
- * Western Ventures

<https://www.portseattle.org/business/bid-opportunities>

Diversity in Contracting - Bid Opportunities



View/Register for Current Bid Opps
VendorConnect



View Future Bid Opportunities



VendorConnect External User Guide



Find Certified Firms

Minority, Women and Disadvantaged
Business Enterprises



Contractor Data System

Log in to CDS

Questions?