

Sea-Tac International Airport

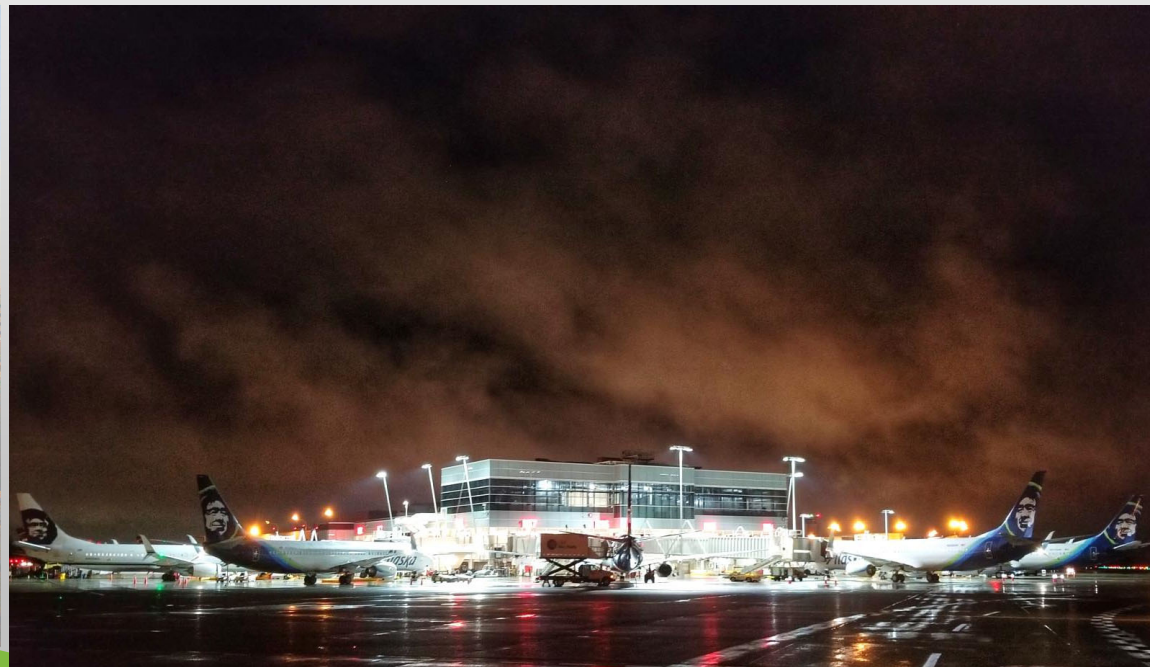
North Satellite and International Arrivals

Janice Zahn, P.E., CCM

March 19, 2019



Port of Seattle



2019 NWCCC Show & Tell

PROJECT OVERVIEW



- 12 to 20 contact gate positions
 - 263,000 sf to 428,000 sf

Key elements:

Infrastructure

Gate additions

Clerestory “river”

Airline services

Marketplace

Station lobbies

Technology

Seismic reinforcement

North Satellite Modernization (GC/CM with MC, EC/CM)



Total Project Cost: \$658 Million
Construction Start: June 2016
Construction Complete: May 2021

September 2015



February 2019



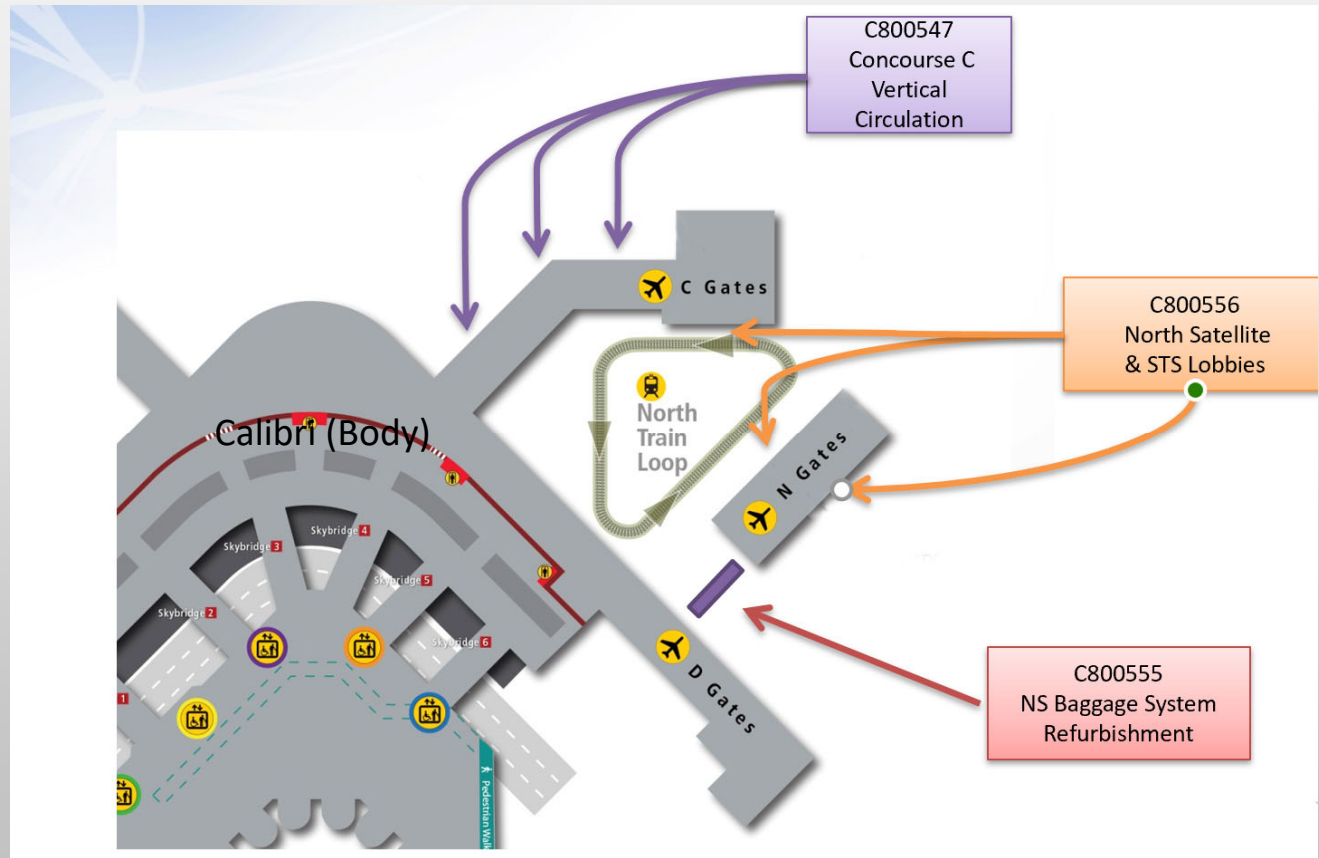
Rendering 2020



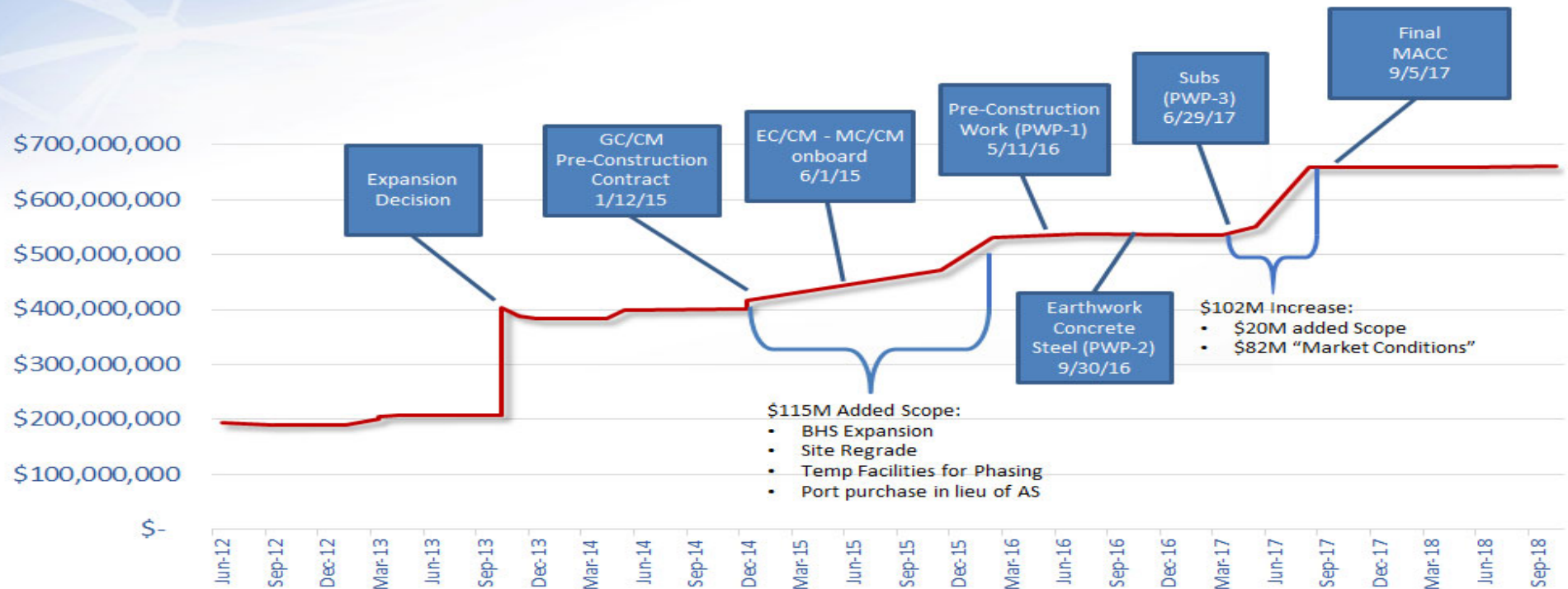
Project Team Members



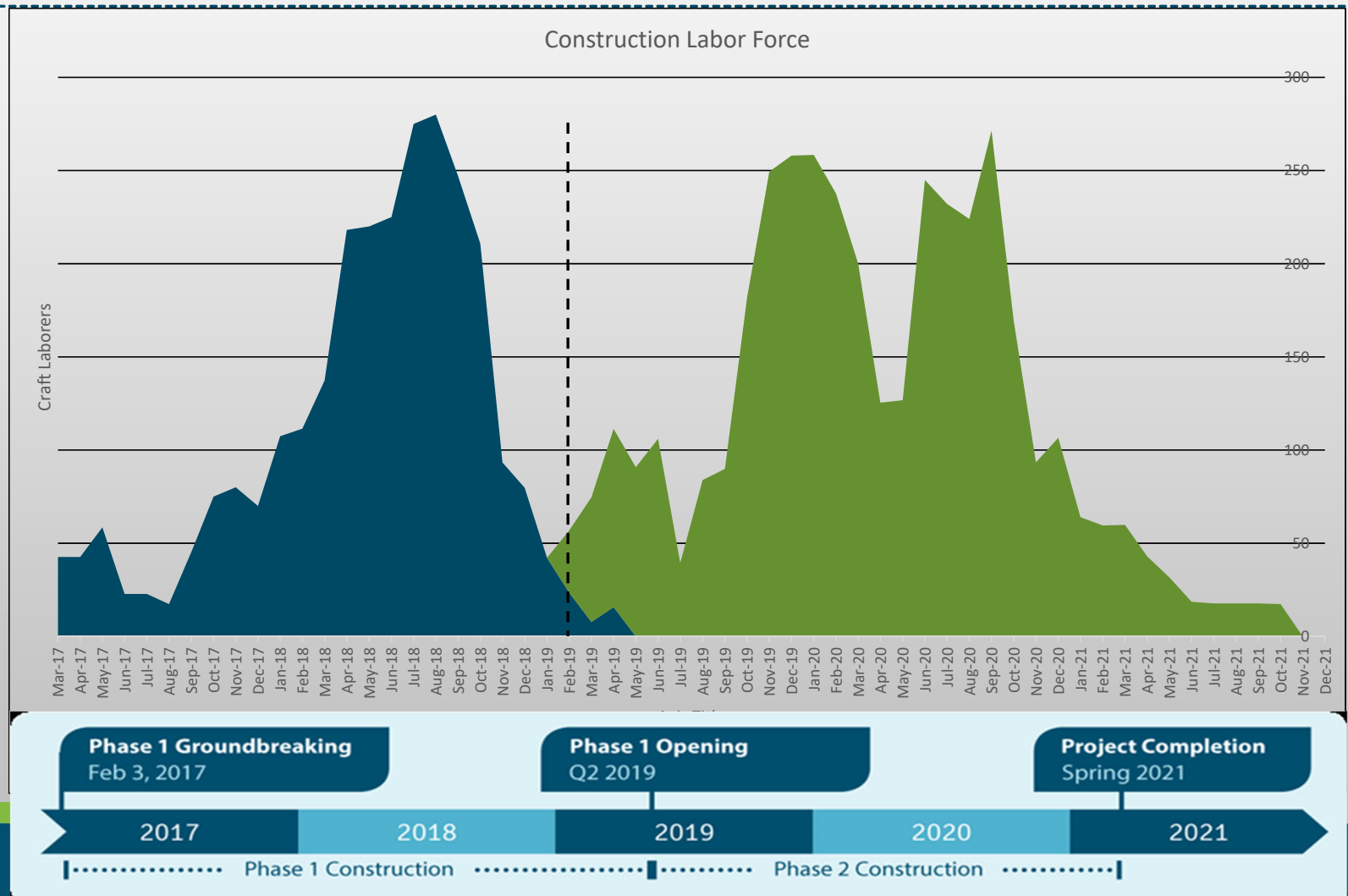
- North Satellite
 - 150,000 sf Expansion
 - Building renovation
 - 8 new gates
- Concourse C improvements
- STS Lobbies
- 27 new Airport Dining and Retail Tenants



Key Budget Milestones



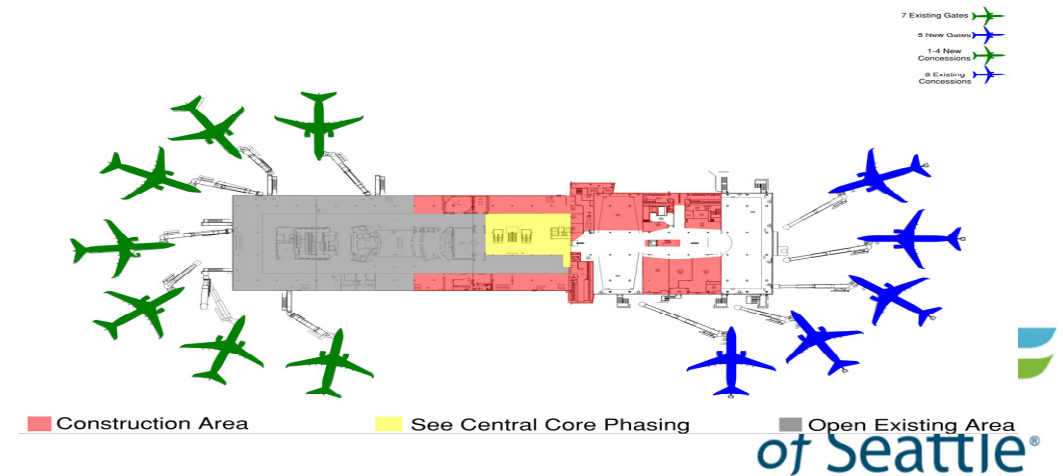
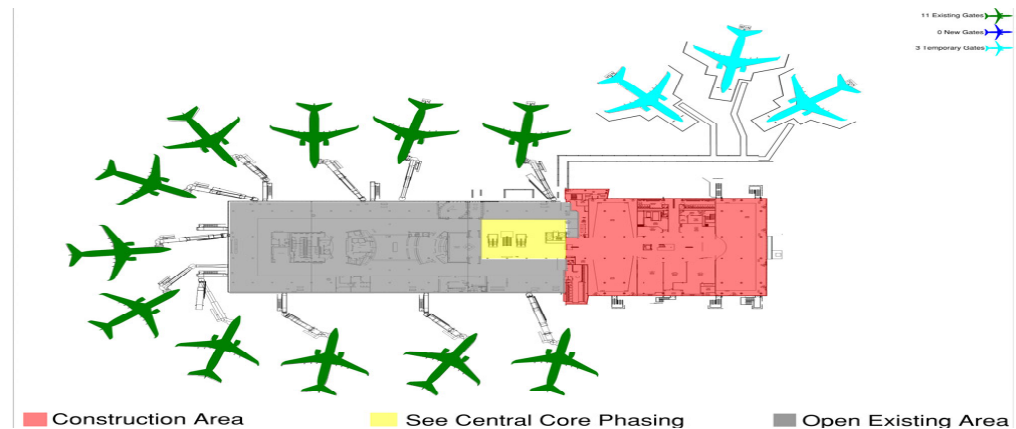
Construction Labor Planning



Project Phasing

Start of Phase 1 – March 2017. Relocation of North Gates Accomplished in Early Work

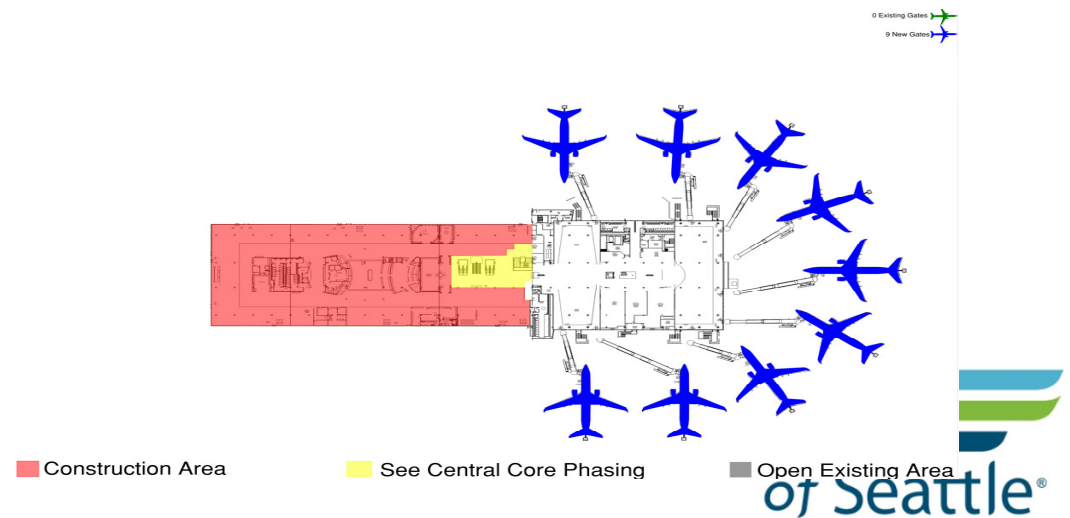
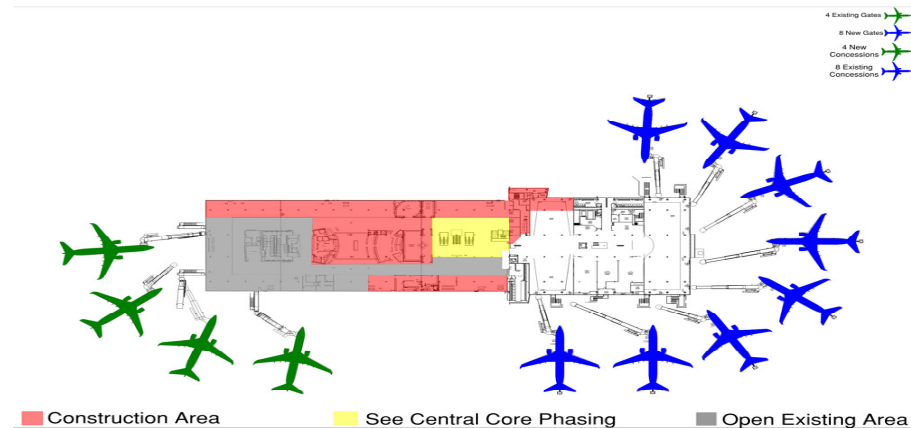
Phase 1A – Current



Project Phasing

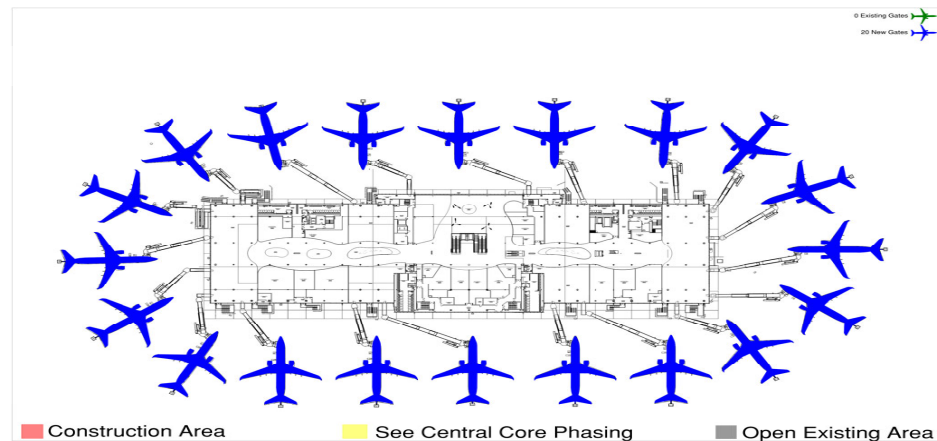
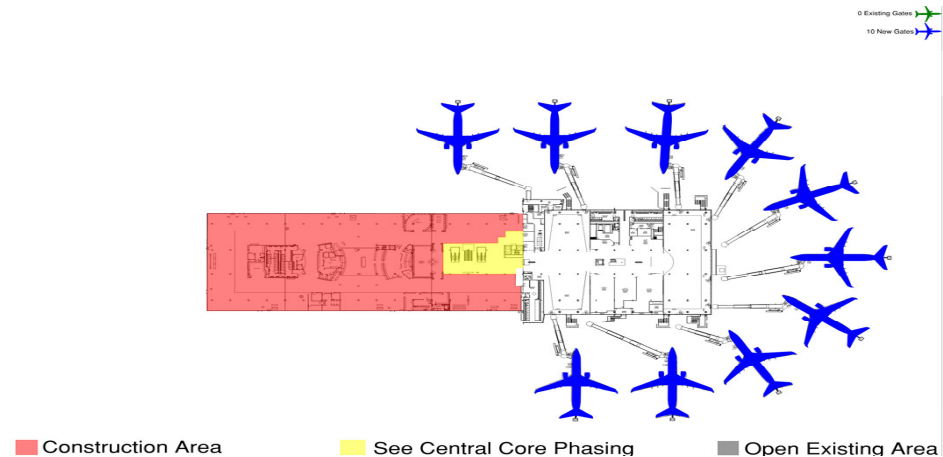
Phase 1B Completion
– Second Quarter of
2019

Gate N12 Available –
Second Quarter of 2019.
– Some Bussing to
Hardstand Required



Project Phasing
Gate N11 Active –
Third Quarter of 2019
– Some Bussing to
Hardstand Required

Phase 2 Completed
– Third Quarter of
2021



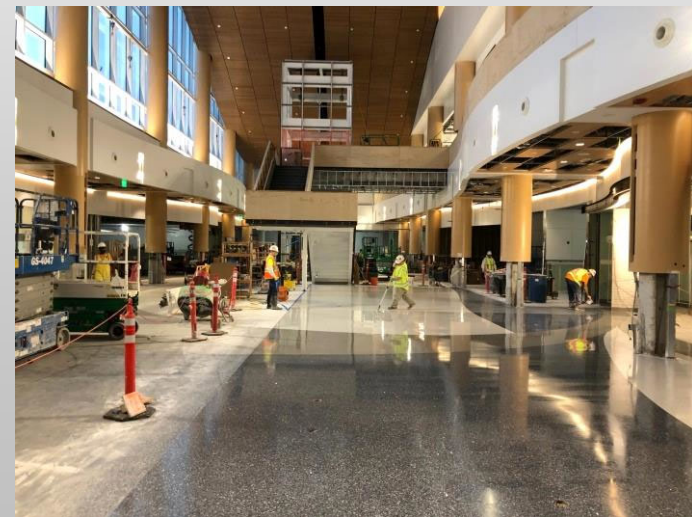
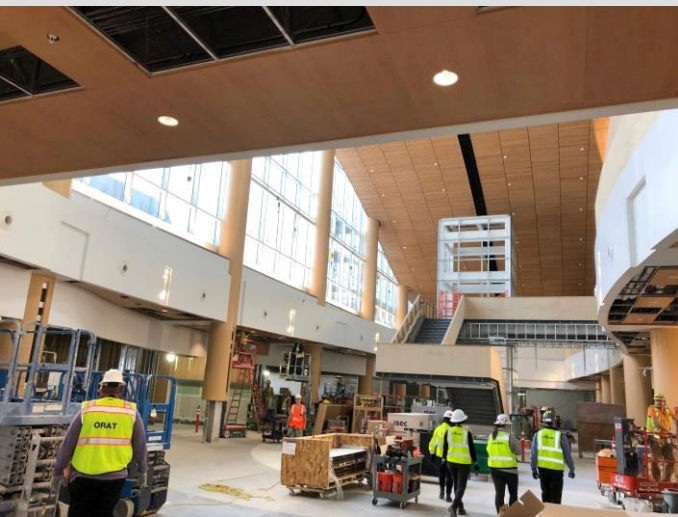


Excavation and Groundbreaking 2017

Steel erection 2018









Open for business

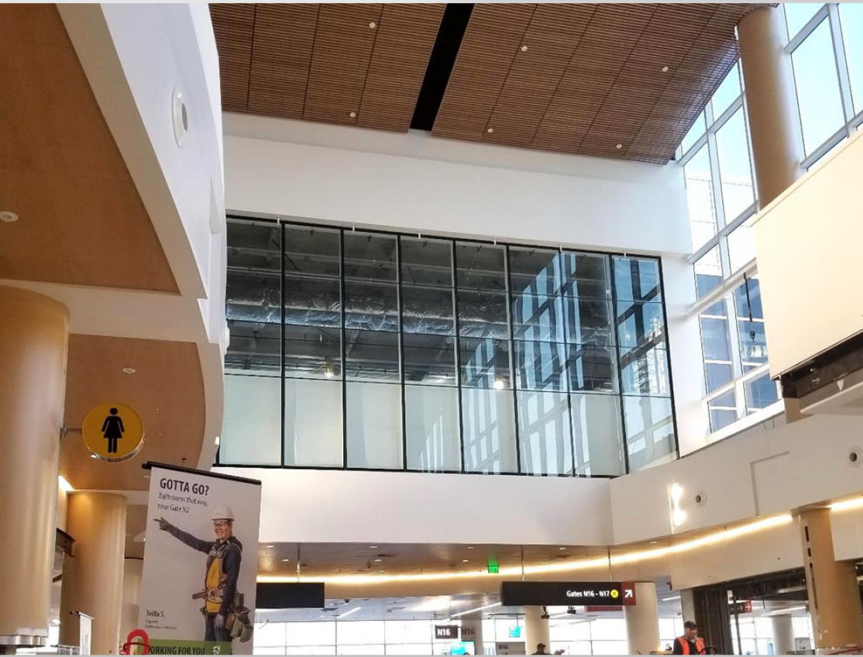


Holdroom – Old vs. New Design Concept





Alaska Lounge





Baggage Handling Systems



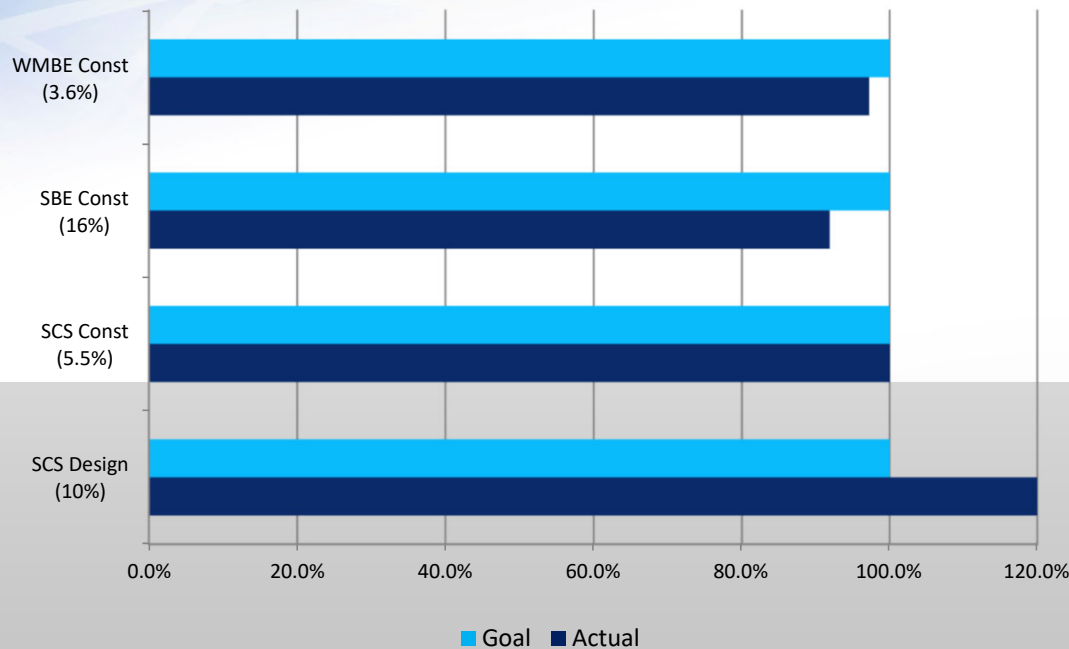
Night and Day difference in North Satellite



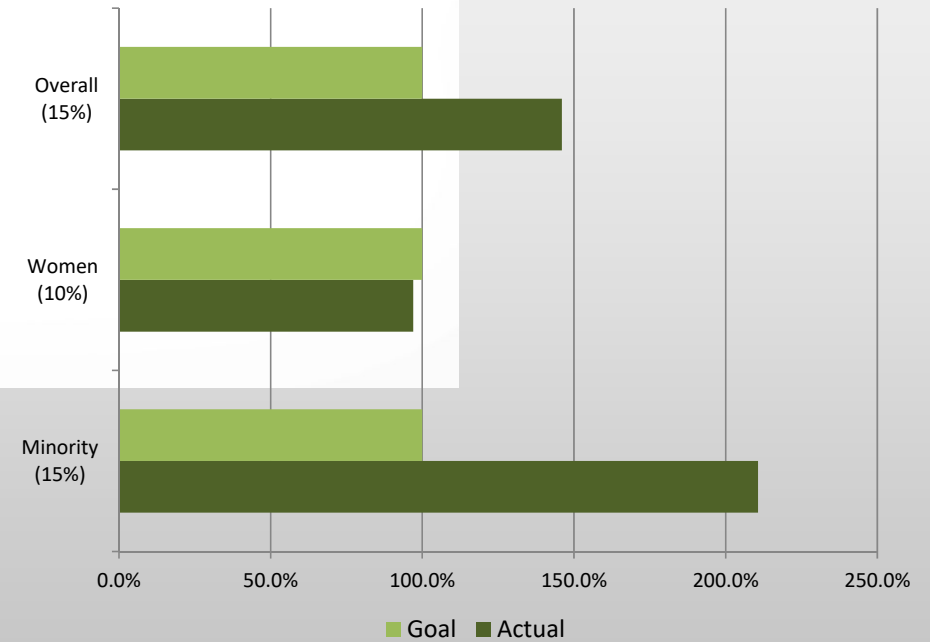
SMALL BUSINESS/APPRENTICESHIP UTILIZATION



SCS/SBE/WMBE



APPRENTICESHIP

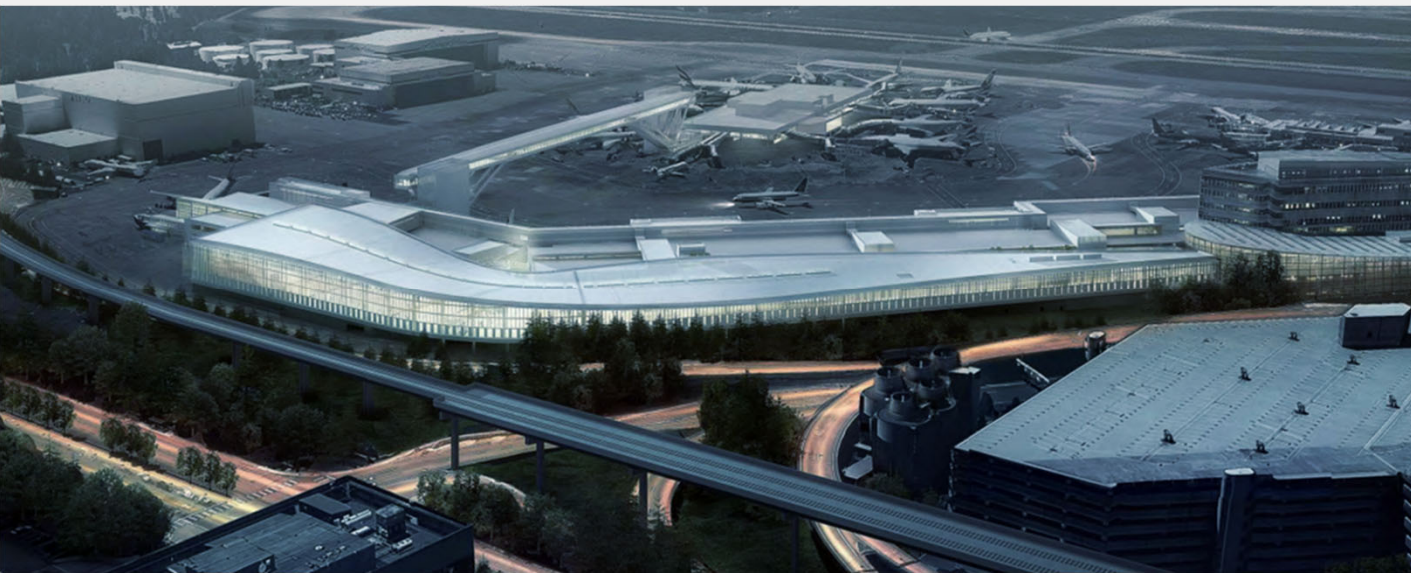


- On track to meet or exceed 2014 goals by completion



Tracking close to or exceeding goals

International Arrivals Facility



- 20 international gates
- 760' long pedestrian walkway
- 450,000 sf facility
- 2,600 pax per peak hour
- 1,800 lf bag claim belt
- 7 bag claim devices
- 40 CBP officer podiums

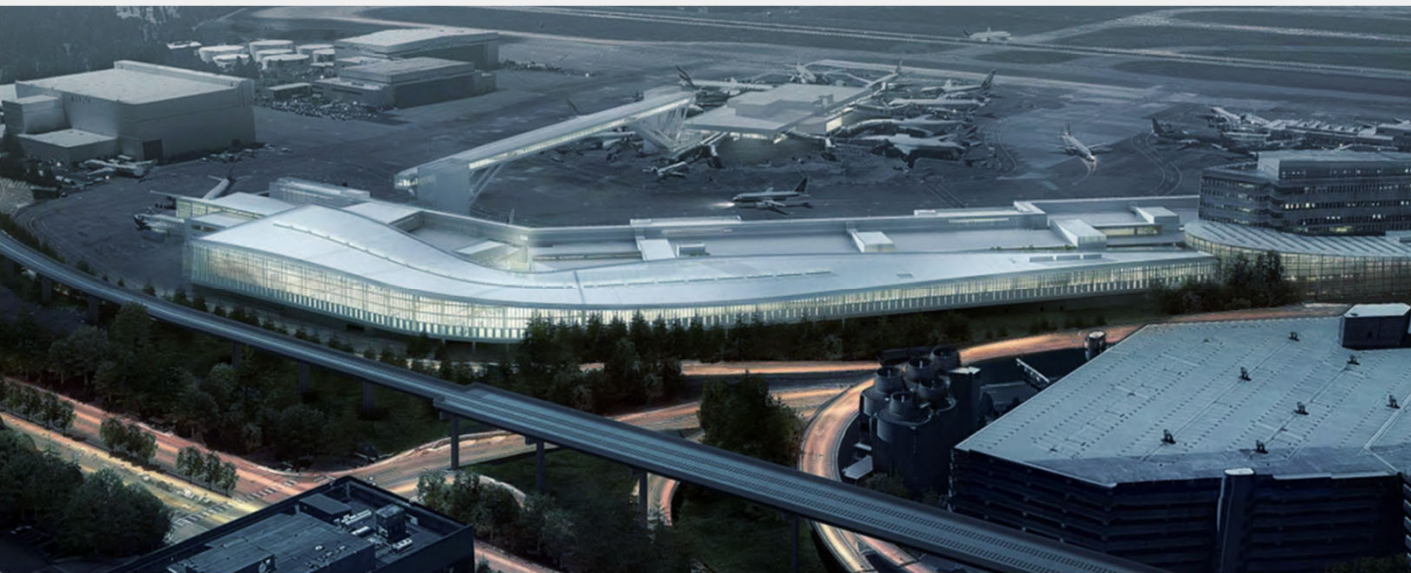
Key elements:

CBP Offices and Processing
Recheck Counter
Baggage Claims

Airline Customer Service
Iconic Pedestrian Walkway

International Gates
Facial Recognition

International Arrivals Facility



- 20 international gates
- 760' long pedestrian walkway
- 450,000 sf facility
- 2,600 pax per peak hour
- 1,800 lf bag claim belt
- 7 bag claim devices
- 40 CBP officer podiums

Key elements:

CBP Offices and Processing
Recheck Counter
Baggage Claims

Airline Customer Service
Iconic Pedestrian Walkway

International Gates
Facial Recognition

Progressive Design Build

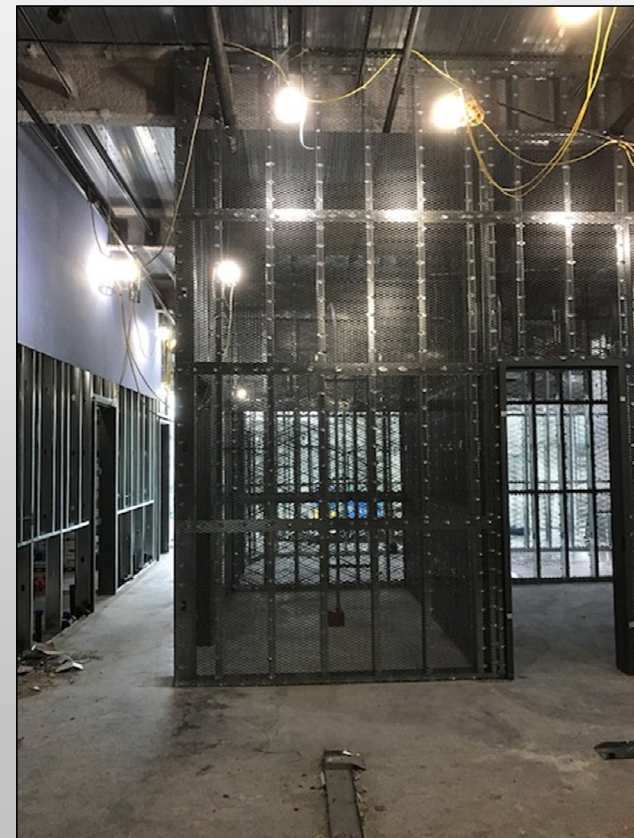
Design-Build Team:

- **Clark Construction**
- **SOM**

Total Project Cost: \$968 Million

Construction Start: 2017

Construction Complete: 2020



ACCOMPLISHMENTS: Slab on Metal Deck Nearly Complete and CBP “Secure Construction” Inspections



ACCOMPLISHMENT: Pedestrian Walkway Concrete Support Cores – South Satellite



ACCOMPLISHMENT: Pod B Turnover (Gate A9) and Pod C Construction Start



PROGRESS: IAF Roof, Skylights, Window Curtain Wall and Escalators



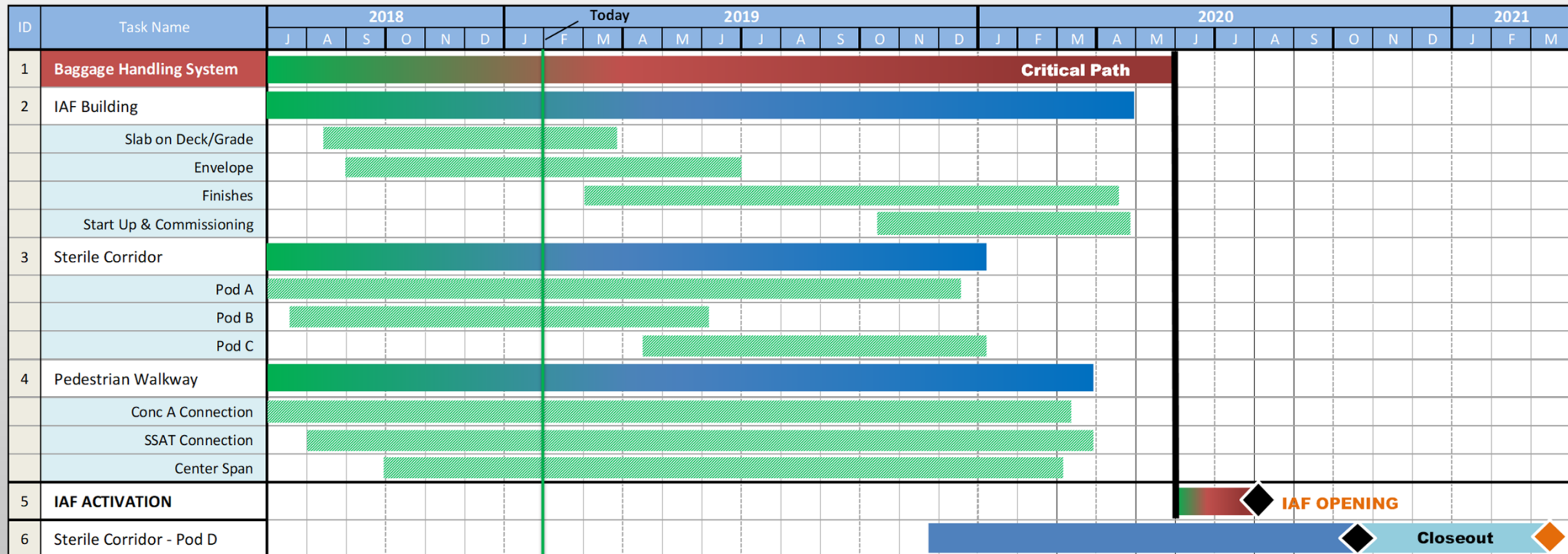
PROGRESS: Arrivals Building CMU, MEP Rough-In, Lightwell Curtainwall



PROGRESS: Pedestrian Walkway- Center Span Construction at Cargo 2



SCHEDULE *(December 2018 Progress Update)*



IAF's Critical Path for on-time completion currently runs through the Baggage Handling System

SMALL BUSINESS/APPRENTICESHIP UTILIZATION

Small Business	# Firms Engaged	\$ Awarded
Small Business	120	\$122M
Small Contractor Supplier	43	\$26M

Apprentice Utilization	% of all Labor	Hours Worked
Total Apprentice Hours	20.45%	167,350
Minority	20.4%	145,684
Female	9.1%	21,665

GMP participation commitment attained.

Seattle-Tacoma International Airport

Port of Seattle®



