



NORTHWEST CONSTRUCTION CONSUMER COUNCIL

What is the NWCCC?

The NWCCC is a forum for public and private owners with capital construction programs in western Washington to learn best practices in project delivery. Council members meet together with their design and construction service providers along with regional and national industry experts for up-to-date information on project delivery innovations.



Membership Benefits

Seven to nine programs are held each year by the NWCCC. The programs consist of topics common to project and construction managers among the diverse regional owners, and include speakers from a variety of entities and locations. Annual events include a regional ASC estimating competition for university students, a major project tour, and a full-day program with the presentation of Distinguished Project Awards to conclude the year. Each program provides a unique opportunity to network with fellow project and construction professionals in the region, to learn of the capabilities of a number of design, engineering, and construction contractors, and to hear of new and best practices in project delivery.

2019 Programs

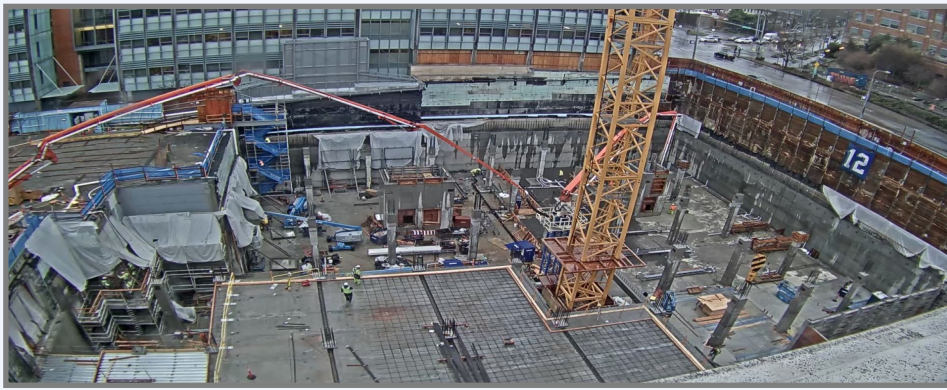
Date	Event	Topic	Location
January 23, 2019	Student Bid Competition	Bid Presentations and Feedback - UW, WSU, CWU, and OSU	Port of Tacoma
February 7, 2019	Education Program	Construction and Economic Outlook	Lynnwood Convention Center
March 19, 2019	Education Program	Show & Tell: Current Member Projects	Lynnwood Convention Center
April 23, 2019	Education Program	Claims Avoidance and Management	Lynnwood Convention Center
June 20, 2019	Education Program	Why Is "Safe" a Four-Letter Word?	Lynnwood Convention Center
TBD	Project Tour	TBD	TBD
September 26, 2019	Education Program	Real Solutions to Real World Project Problems	TBD
November 6, 2019	Annual Conference	Successful Project Management and Leadership	Lynnwood Convention Center



NORTHWEST CONSTRUCTION CONSUMER COUNCIL

Membership Levels for 2019

- * **Level 1:** \$1950/year — includes 8 program attendances per year plus company name on NWCCC website; discounted annual conference fee.
- * **Level 2:** \$2950/year — includes 16 program attendances per year plus company name on NWCCC website; discounted annual conference fee.
- * **Level 3:** \$5200/year — unlimited program attendance, speaking opportunities, monthly program sponsorships, company name and logo prominent on NWCCC website and at events, discounted annual conference fee.
- * **Non-members** can attend the monthly programs for \$299 per person. Member attendance beyond annual allotment are \$299 per person.



2019 NWCCC Executive Committee

Chair	Lisa Taylor	Project Planning and Delivery Section Manager	King County Wastewater Treatment Division
Vice Chair	Bruce Lierman	Project General Manager	BP
Past Chair	Joe Murphy	Turnaround Manager	Phillips 66
Treasurer	Neil Fujii	Managing Engineer	King County Solid Waste Div
Officer	Greg Abell	Engineering Manager, Facilities & Asset Management	Boeing
Officer	Jodi Baral	Projects Department Manager	Shell
Officer	Gene Carter	Business Development Manager	Matrix Service
Officer	Nancy Deakins	Assistant Program Manager	Washington State DES
Officer	Deidre Dunkin	CEO/West Coast Strategic Initiatives	Dunkin & Bush (Partner Industrial)
Officer	Jeff Fowler	Director, Construction Mgmt Div	Seattle Public Utilities
Officer	Quinn Golden	Senior Project Manager	Granite Construction
Officer	Rick Heilmann	Manager, Project Engineering	Marathon
Officer	Mark Howell	Senior Vice President	Skanska USA Building
Officer	John Huntley	CEO/President	Mills Electric
Officer	Carol Rhodes	Senior Project Manager	Port of Tacoma
Officer	Steve Tatge	Executive Director, Major Capital Projects	University of Washington
Officer	Janice Zahn	Asst Director of Engineering – Construction	Port of Seattle

2019 Owner Members

Boeing	Port of Seattle
BP	Port of Tacoma
King County Solid Waste Division	Seattle Public Utilities
King County Wastewater Treatment Division	Shell
Marathon	University of Washington
Phillips 66	Wash. State Dept of Enterprise Services

2019 Affiliate Members

AECOM	IMCO Construction
Aegion Energy Services (Brinderson)	JH Kelly
Anvil	Kestrel Engineering
Barnhart Crane & Rigging	Leewens
Birch Equipment	Matrix Service
Christenson Electric	Mills Electric
Design Group	Olsson Industrial Electric
Diamond B Constructors	PCL Construction
Dunkin & Bush (Partner Industrial)	Performance Contracting Inc.
Eichleay	Petrochem
Fluor	Powertek Electric
Granite Construction	Skanska USA Building
Greenberry Industrial	VECA Electric & Technologies
Haskell Corporation	Value Management Strategies
Hoffman Construction	Western Refinery Services Inc.
ICE Professional Services	