



Big Data, Blockchain and the Arrival of the Smart Organization

Connecting Parties, Systems and Devices



Mission: Digitize the Construction Supply Chain

Brickschain ingests, manages and interprets construction and real estate data. It connects companies, software and devices in real time— all in the effort to improve productivity, reduce risks and ensuring projects end on time and on budget.



Bassem Hamdy

CEO / Co-Founder



Agenda:

1. Current State of Integration Between Parties in Construction
2. Challenges Around Integration
3. The Brickschain Method for Connecting parties, systems and devices
4. Live Examples

Across Parties, Systems and Devices



BRICKSCHAIN

Who is Brickschain

First company to market with a blockchain
built for construction and capital projects

First company to find product market fit



BRICKCHAIN

AON Certified:

1. Delays in Claims Discovery
2. Schedule & Cost Overrun
3. Ability to Prove Impact Costs
4. Over and Under Payment
5. Loss in Productivity (construction)
6. Warranty



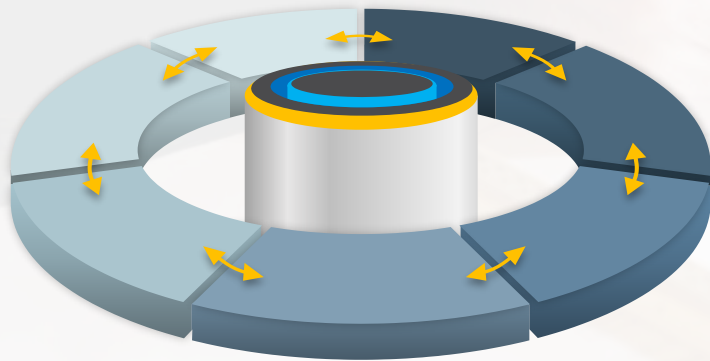
The Built World: The Most Complex Supply Chain

+ Complex Supply Chain

LINEAR

-LINEAR

Walmart 





Current State of Solving the Integration Gap



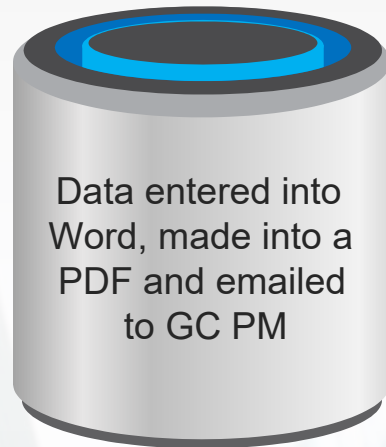
Data Handover: Email and PDF

If construction was a relay team we would finish dead last. Data is generally made into PDFs or Emails and stored in multiple locations.

Example:



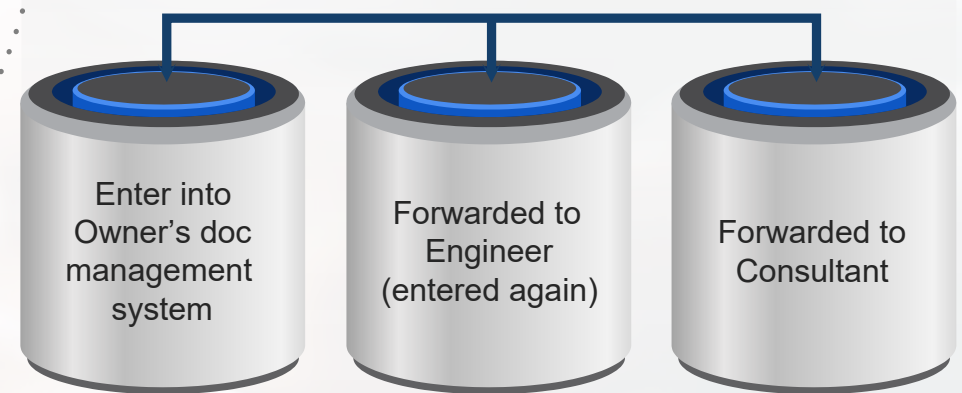
Question asked by Subcontractor



Data received by GC, Reviewed and questions updated



Owner receives And tries to answer



If Question = Data and Attachments = Data

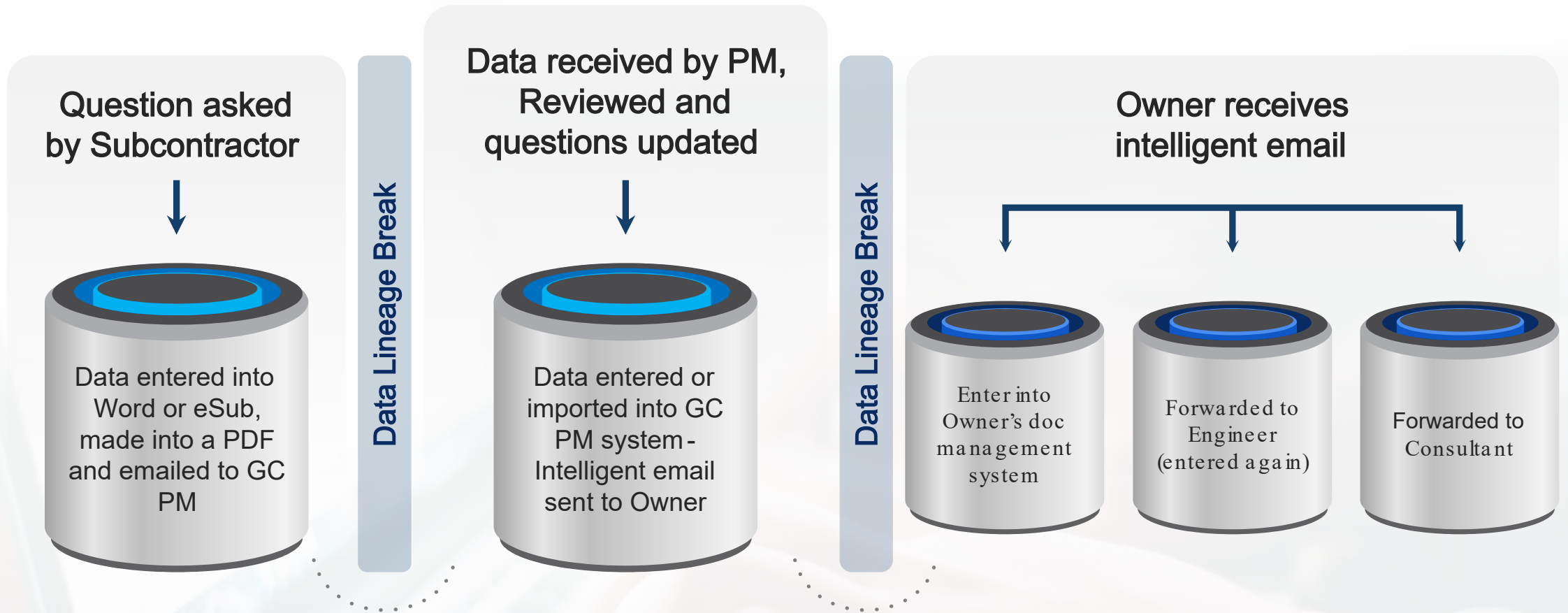
Data now exists in at least 5 different silos

If the Question is Changed or an attachment needs updating, all systems need to be coordinated again

If Question = Data and Attachments = Data

Data now exists in at least 5 different silos

If the Question is Changed or an attachment needs updating, all systems need to be coordinated again



How many systems need to be updated when answered



**ALL PEOPLE ARE UPDATED IN DIFFERENT WAYS AND DATA
IS UPDATED AT DIFFERENT TIMES IN EACH SOLUTION**

EVERYONE GETS OUT OF SYNC

+ Sledge Hammer Solution

Everyone use MY system!



Some of you may have seen this

Data goes to the ledger first, then to the corresponding player



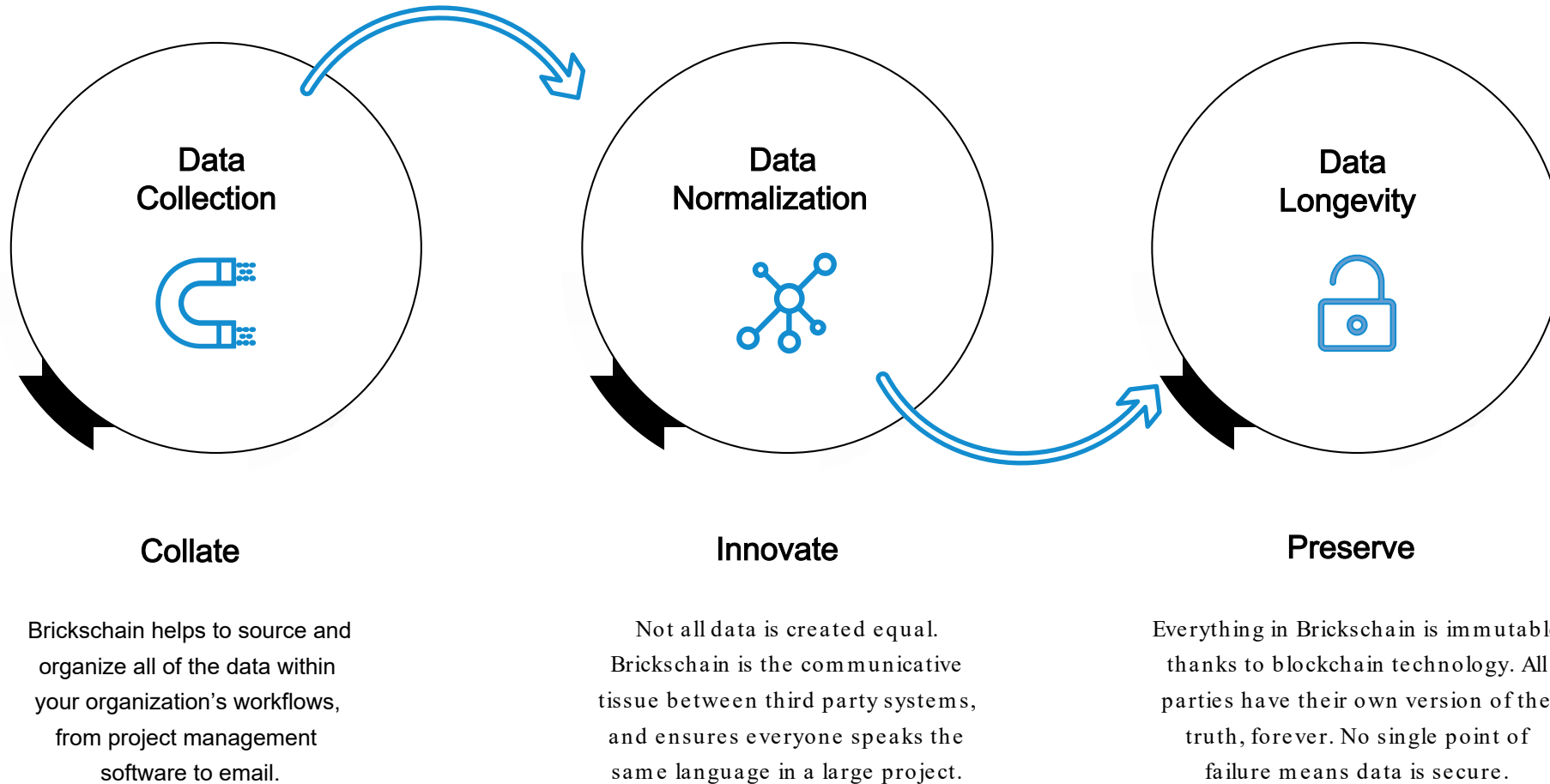


BRICKSCHAIN

**Blockchain, Machine Learning, AI and IoT for the
Built Environment.**

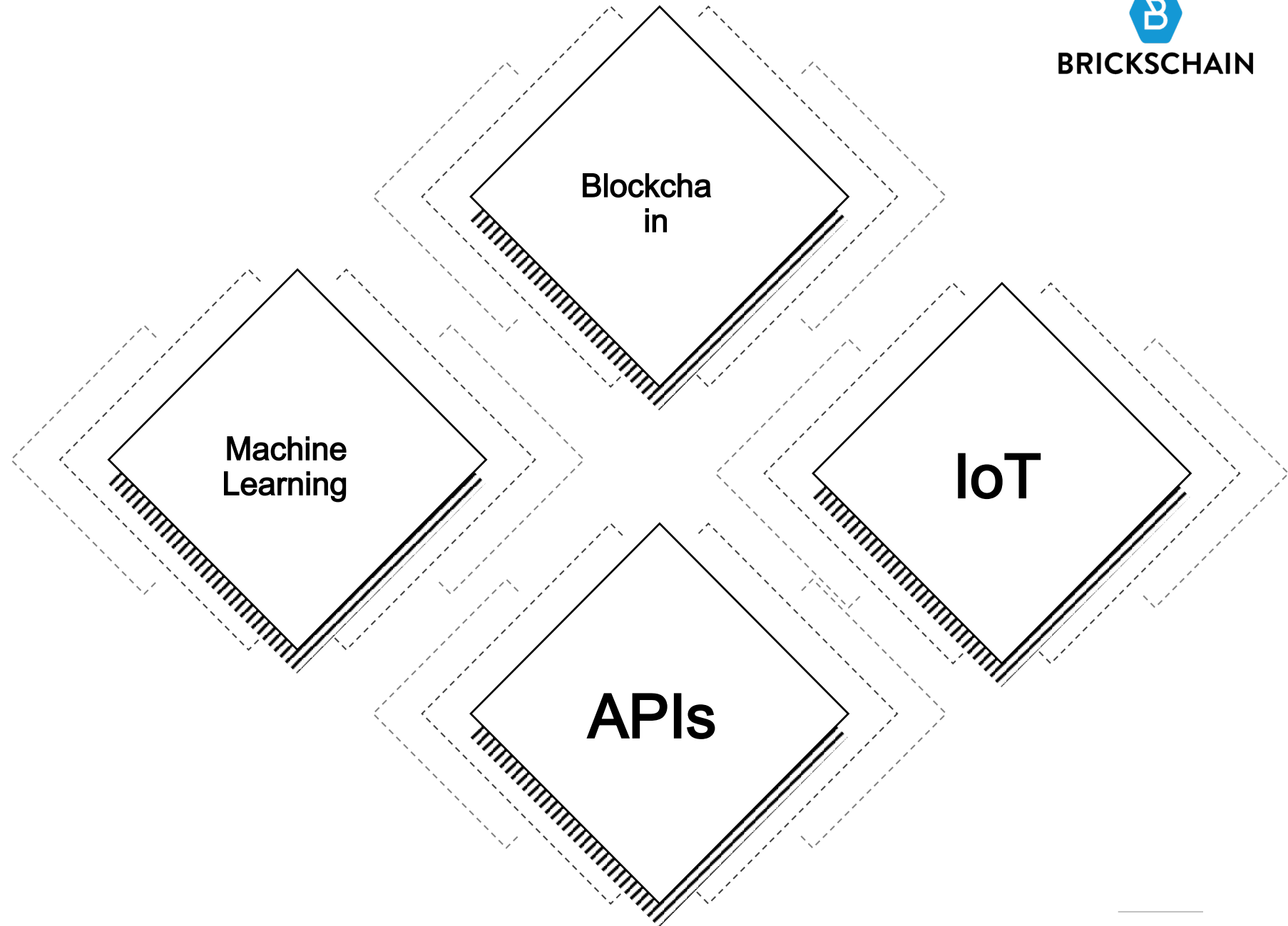
Brickschain ingests, manages and interprets construction and real estate data. It connects companies, software and devices in real time – all in the effort to improve productivity, reduce risks and ensuring projects end on time and on budget.

How does Brickschain work?



Power tools.

These are the building blocks of [Brickschain](#), and when combined these tools give you powerful insight.





The more, the better

Brickschain's power comes from its ability to speak with dozens of project management software programs and IoT devices. Brickschain allows a CMiC program to speak to Procore, and facilitates massive savings in paperwork and double data entry in the process.



Brickschain reads industry documents

Profile
Tutorials
Contact Us
Text OCR Annotation

C2N-CBD-F

CAMEO

Cameo® Keypad, Standard Mount

- Stylish and versatile wall-mount keypad
- Standard electrical box installation
- 12 color-matched smooth and textured finishes
- Accent® solid metal faceplates available separately⁽¹⁾
- Versatile combinations of 2 to 8 pushbuttons
- Installable configurable with choice of 4 button sizes
- "Quit" buttons for "up/down" and "on/off" functions⁽¹⁾
- "Button Events" enable tap, double-tap, and press and hold functionality
- Customizable backlit button engraving⁽¹⁾
- White LED feedback indicators
- Built-in LED dimming and bar graph logic
- Auto-dimmable backlight and LED intensity
- Ambient light sensor
- Dual digital-sensing input ports for external sensors
- Quick and easy installation
- Creston® wired communications

The Cameo® Standard Mount Keypad (C2N-CBD-F) from Creston® presents a fresh, innovative concept in keypad design, featuring a highly configurable one-gang wall mount form factor that is at once inviting to the touch and appealing to the eye. The C2N-CBD-F easily installs alongside other low-voltage in-wall devices to deliver an advanced custom keypad control solution as part of a complete Creston control system.

Customizable Buttons

Exquisitely simple yet highly customizable, a single Cameo Keypad can be configured easily by the installer to provide from two to eight buttons. Each keypad is actually furnished with an assortment of button caps in four different sizes to support a variety of physical layouts. Button caps may also be ordered with custom backlit laser engraving to clearly designate each button's function.⁽¹⁾

Through programming, each button can be configured to use "button events," affording up to three separate functions per button by tapping, double-tapping, or pressing and holding the button. "Shift key" functionality, in which the user presses and holds one button while simultaneously tapping another, provides further customization for this versatile keypad.

Auto-dimming Backlight

High-quality backlit laser engraving⁽¹⁾ provides customizable button text that's easy to read under any lighting condition. A built-in light sensor controls the backlight intensity automatically to achieve crisp, legible text in both darkened and fully lit rooms.

Almond

Black

White

Truly

Ivory

Dark Almond

Green

Latte

Chalk

smooth/textured

smooth/textured

smooth/textured

smooth

smooth

smooth

smooth

smooth

smooth

Set Block Attribute Value

Set the block attribute value by clicking inside the bounding area

Block 1

#

Block Attribute

Model Number

Block 2

Order

Block Text

C2N-CBD-P

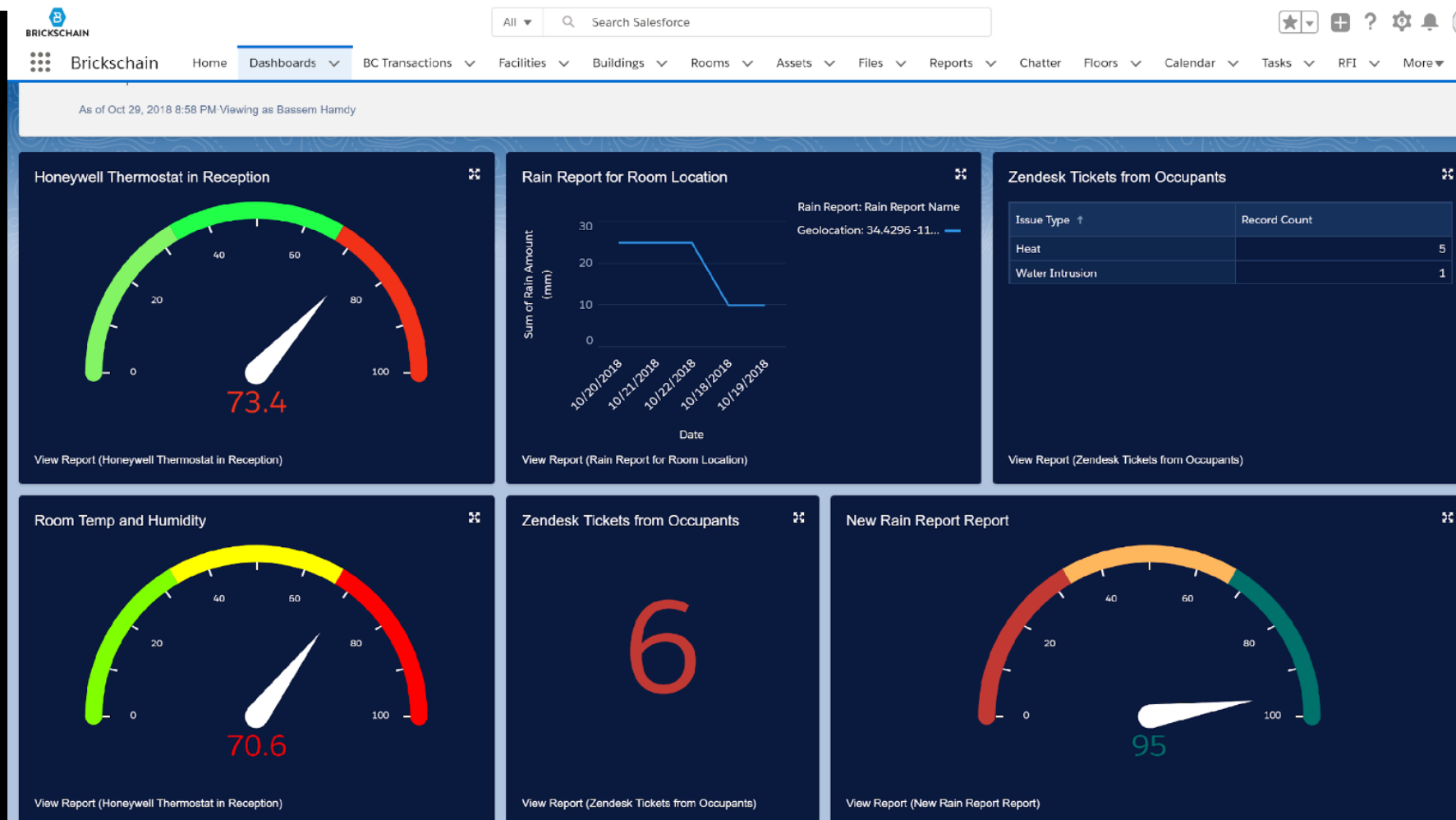
Save

Brickschain connects and runs smart devices



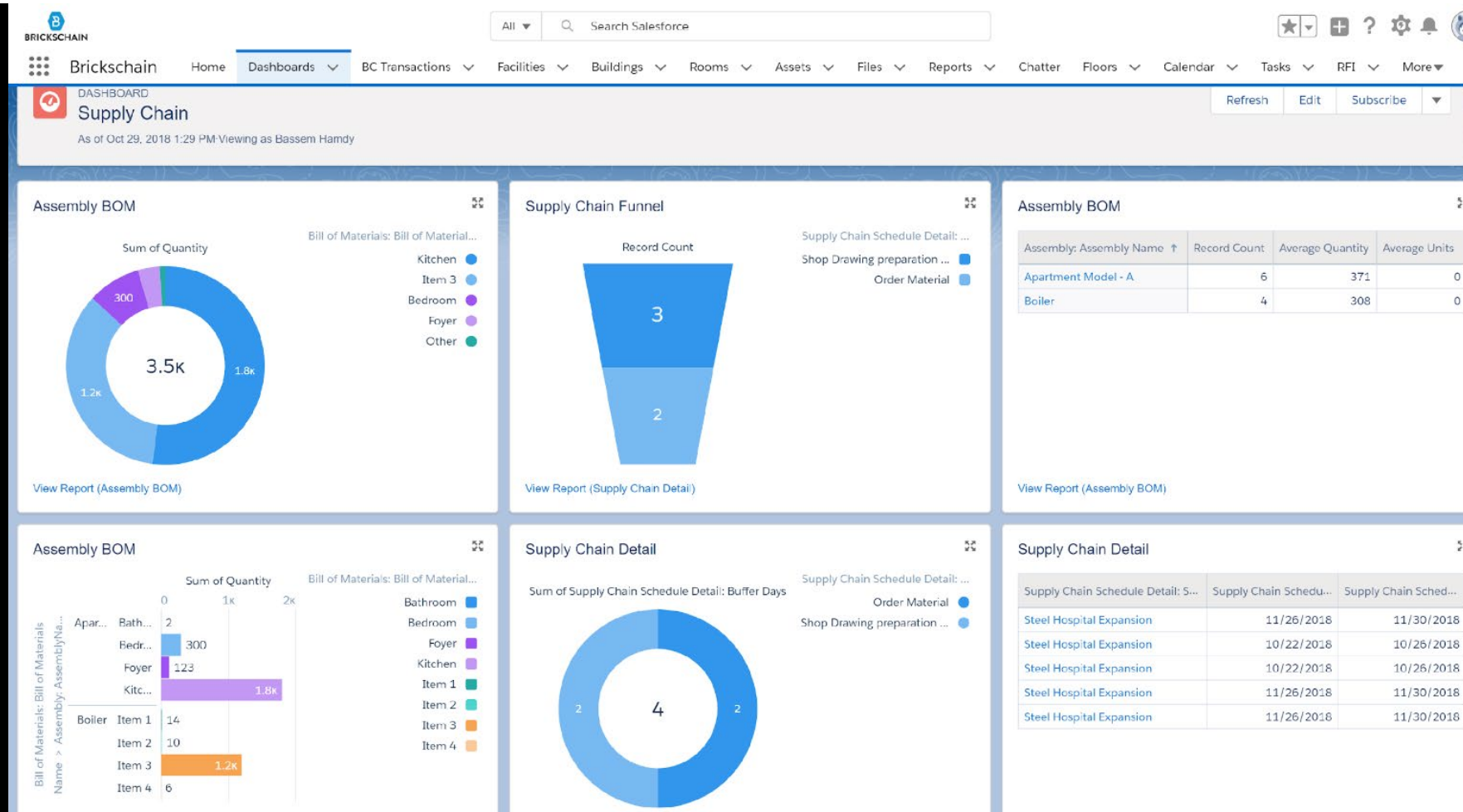
Predictive Analysis: predict mold growth in a building

Based on real data. Saves companies money and averts disaster.



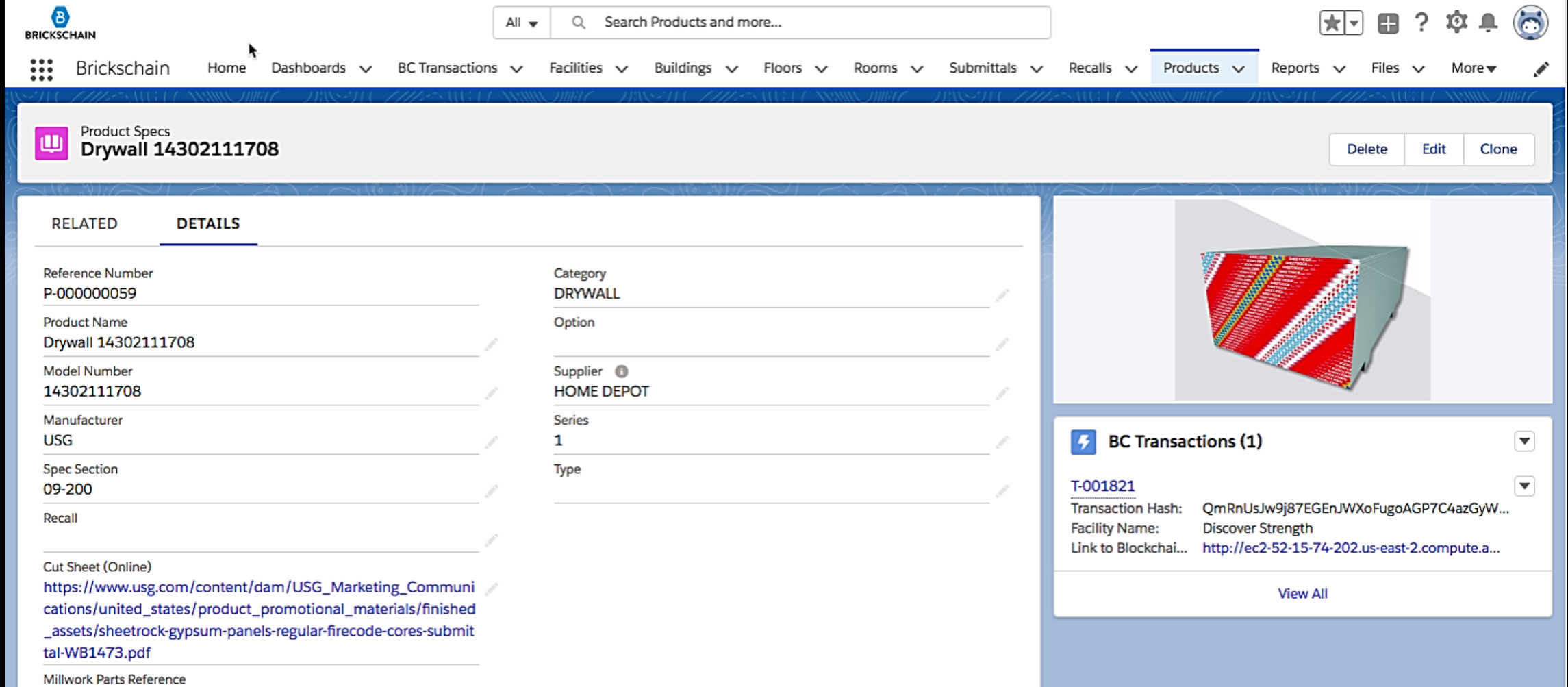
Transparency in Fabrication and Procurement

85% of companies say they have no transparency in the Procurement and Manufacturing Process on a project. Brickschain tracks the submittal schedule in real time across all parties.



Advanced Asset Tracking and Management

Tracking assets by room and location provide transparency to total cost of ownership, warranty repairs and tracks recalled product to keep your projects and buildings safe.



The screenshot shows the Brickschain web application interface. At the top, there's a navigation bar with the Brickschain logo, a search bar, and various menu items like Home, Dashboards, BC Transactions, Facilities, Buildings, Floors, Rooms, Submittals, Recalls, Products (selected), Reports, Files, and More. Below the navigation bar, the main content area displays the 'Product Specs' for 'Drywall 14302111708'. The product details are organized into two columns: 'RELATED' and 'DETAILS'. The 'RELATED' column lists fields like Reference Number, Product Name, Model Number, Manufacturer, Spec Section, Recall, Cut Sheet (Online), and Millwork Parts Reference. The 'DETAILS' column lists fields like Category, Option, Supplier, Series, and Type. To the right of the product details, there's a 3D visualization of a drywall panel with a QR code overlay. Below the 3D visualization, there's a section for 'BC Transactions (1)' showing a transaction hash, facility name, and a link to the blockchain explorer.

BRICKSCHAIN

All Search Products and more...

Brickschain Home Dashboards BC Transactions Facilities Buildings Floors Rooms Submittals Recalls Products Reports Files More

Product Specs
Drywall 14302111708

Delete Edit Clone

RELATED	DETAILS
Reference Number P-000000059	Category DRYWALL
Product Name Drywall 14302111708	Option
Model Number 14302111708	Supplier HOME DEPOT
Manufacturer USG	Series 1
Spec Section 09-200	Type
Recall	
Cut Sheet (Online) https://www.usg.com/content/dam/USG_Marketing_Communications/united_states/product_promotional_materials/finished_assets/sheetrock-gypsum-panels-regular-firecode-cores-submit-tal-WB1473.pdf	
Millwork Parts Reference	

BC Transactions (1)

T-001821

Transaction Hash: QmRnUsJw9j87EGEnJWXoFugoAGP7C4azGyW...

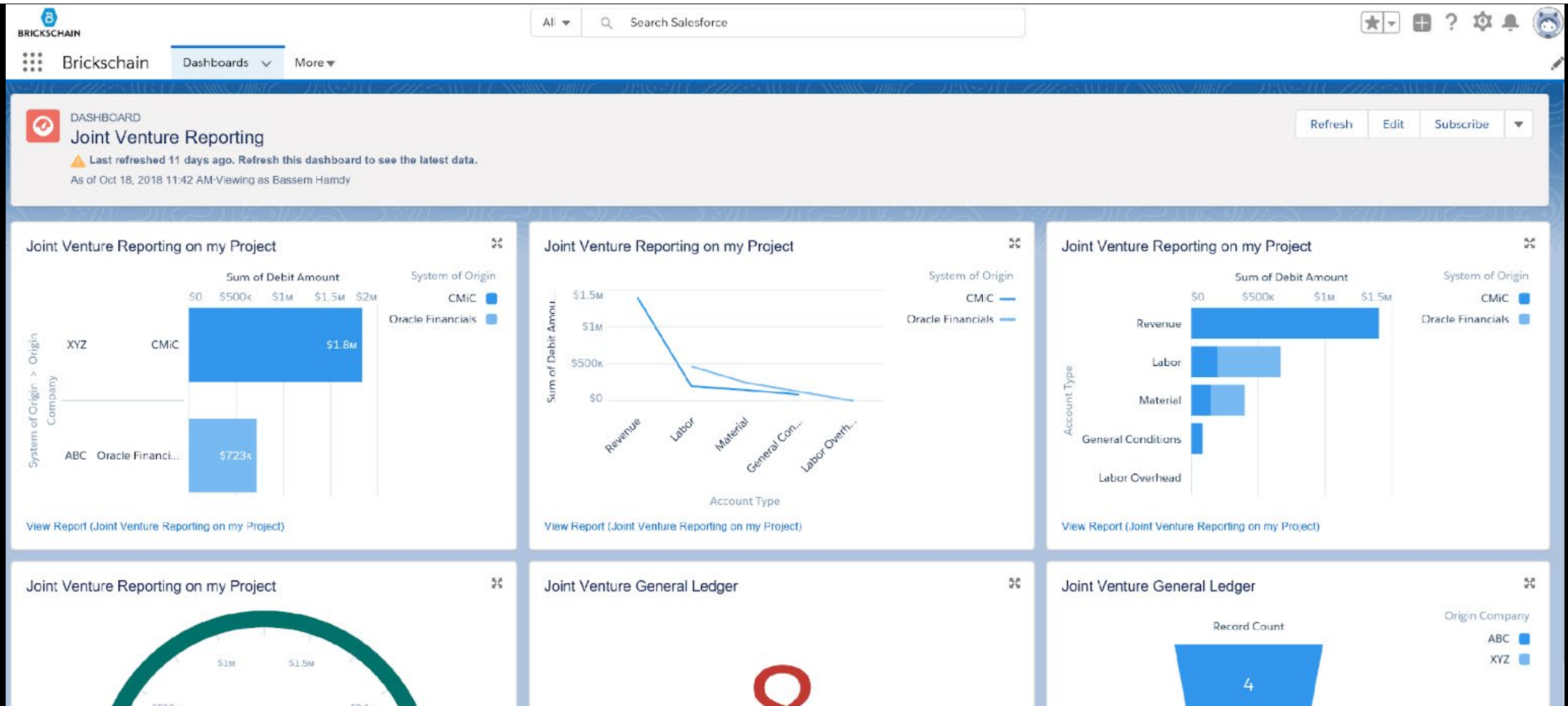
Facility Name: Discover Strength

Link to Blockchai... <http://ec2-52-15-74-202.us-east-2.compute.a...>

View All

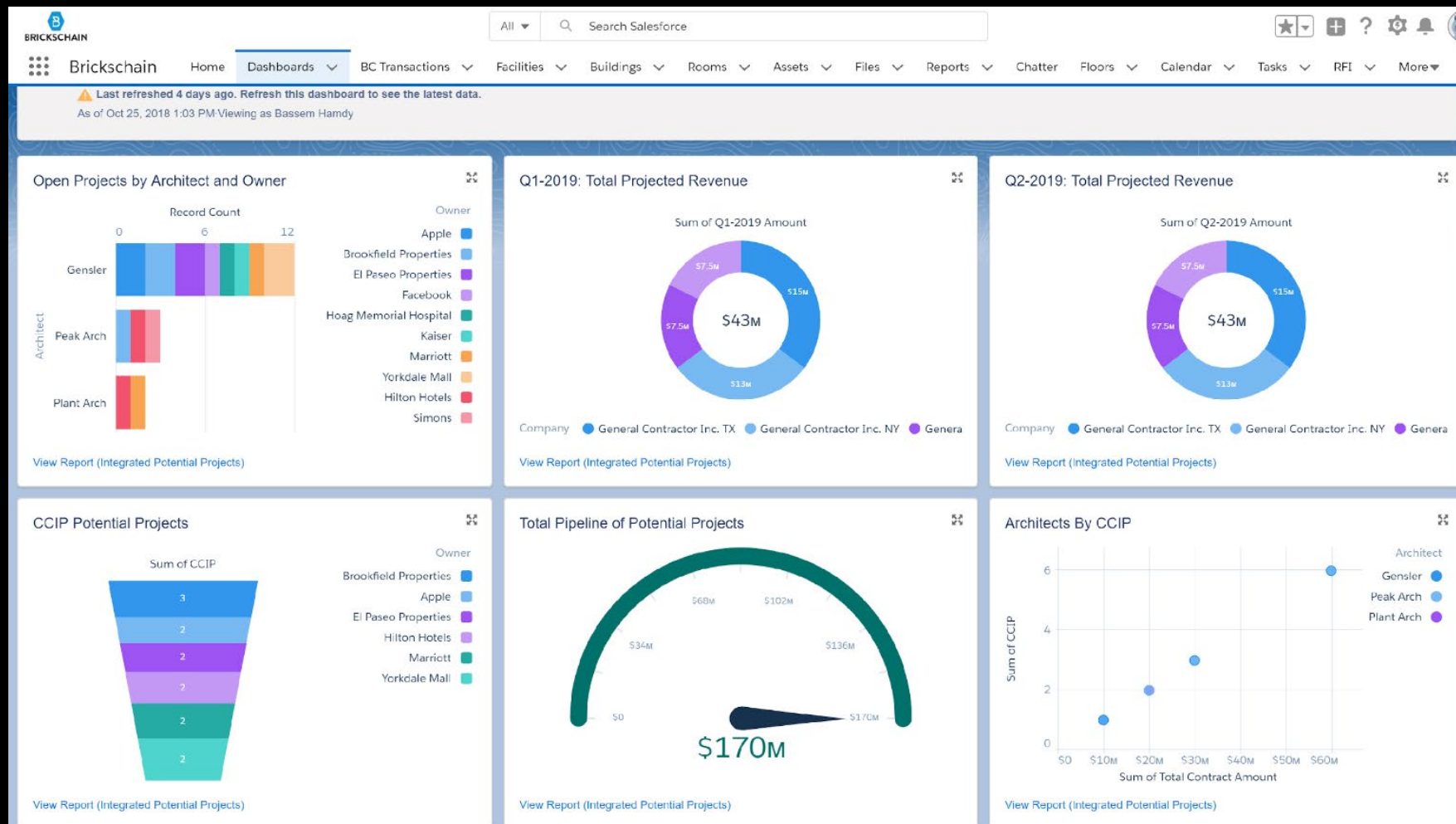
Connects internal and external systems effortlessly

Whether connecting an accounting and project management system in your company or gluing together multiple accounting systems across companies for Joint Ventures, Brickschain connects all software and cloud environments.



Connects material and labor on bridge and road projects

Brickschain tracks manufacturing of aggregate, material delivery, and installation. Any cracks can be tracked to location and material batch.



Industries served

Commercial
Construction

Multi -family and
Residential

Oil and Gas

Healthcare

Retail

Heavy Industrial

Bridge and Roads





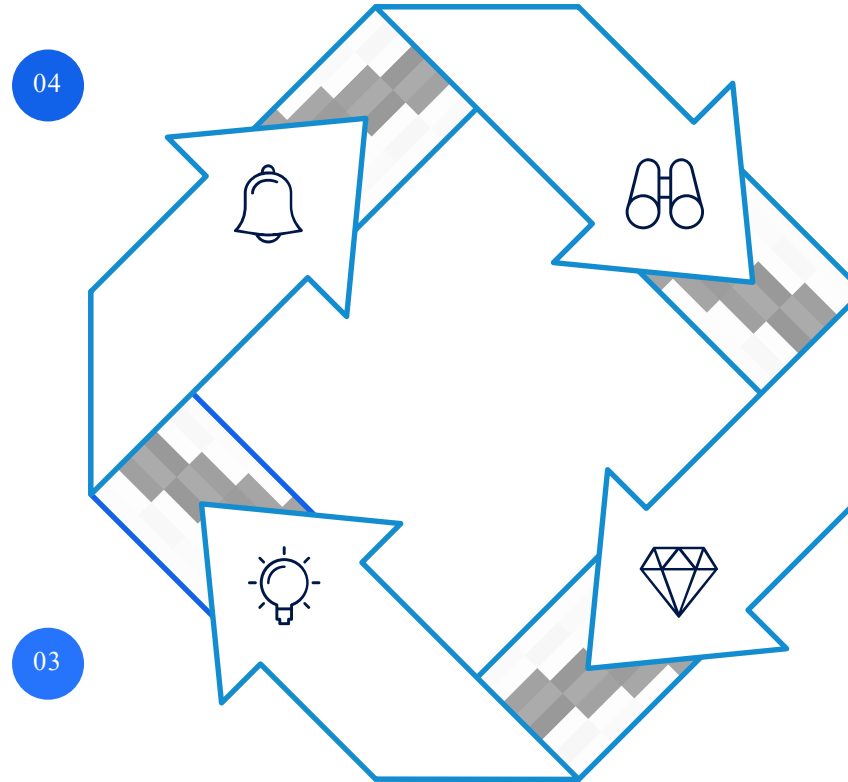
BRICKSCHAIN

Own Your Data

If a building is sold, the ledger can be easily transferred. Owners will have a living, breathing database for the provenance of every item in their building.

Immutable security on the blockchain

An immutable ledger is created for the current and future owners of a building. The history of every action is maintained forever.

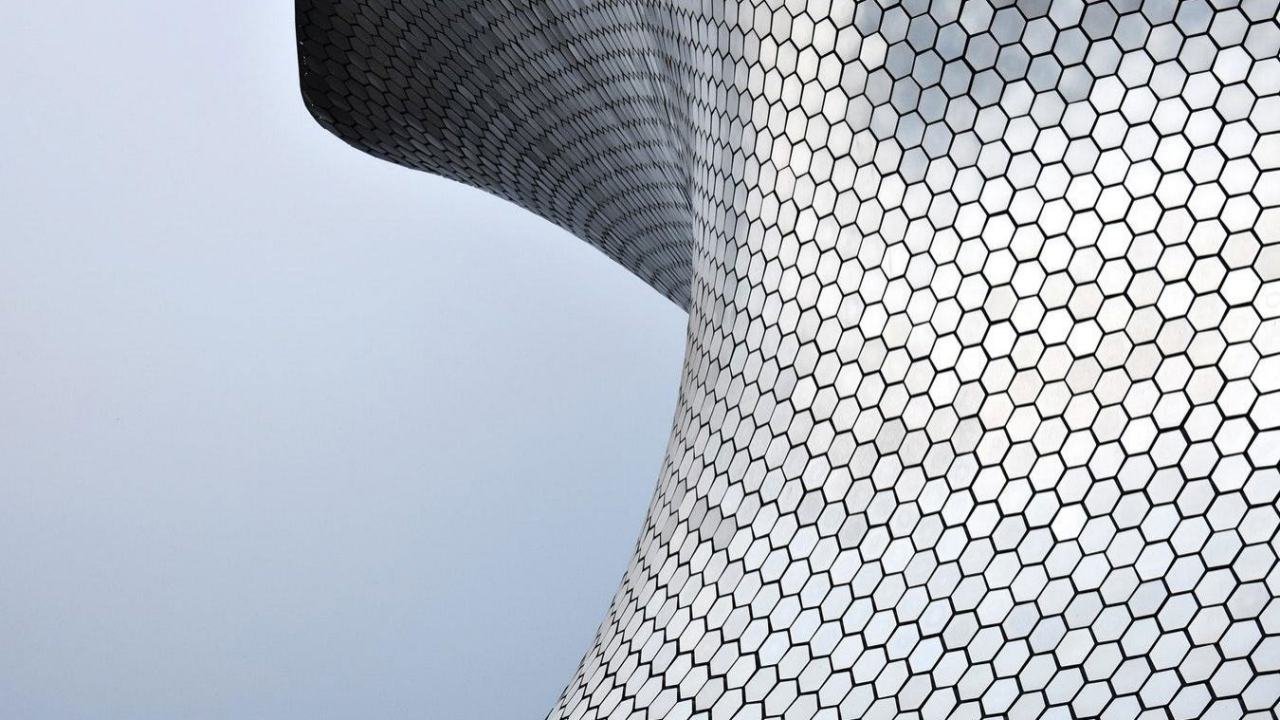


Collaborate and share data safely

There's no double entry with Brickschain. Input into a project management system is automatically reflected on the blockchain.

Move data from cloud environments effortlessly

Inputs are registered on the blockchain in real-time, and from all platforms, including email, Slack, Dropbox and Google.



Run the company you've always run

Keep your existing project management system. This isn't a massive new software roll-out, its a backend system that takes care of your data.



Use **Brickschain** to weave it together

Feel the power of your systems connected. Brickschain is weaving the fabric of Big Data for the built environment.



BRICKSCHAIN



PROBUILD



alston
CONSTRUCTION

